



Census 2011: Warrington

A summary of key statistics and a comparison of change from the 2001 to 2011 Census



Contents

Introduction	1
Section 1: Population	4
1.1 Population density	4
1.2 Resident population	4
1.3 Age Structure.....	5
1.4 Marital and civil partnership status	7
Section 2: Ethnicity, Identity, Language and Religion	9
2.2 Country of birth	11
2.3 Religion	14
Section 3: Health	16
3.1 General health.....	16
3.3 Provision of unpaid care.....	18
Section 4: Housing and Accommodation	20
4.1a Household spaces.....	20
4.3 Tenure	22
4.4 Central heating	24
4.5 Household composition	25
4.6 Car or van ownership by household	28
Section 5: Qualifications	30
5.1 Highest Qualification Attained	30
Section 6: Labour Market	32
6.1 Economic Activity	32
6.2 Unemployed residents	35
6.3 Occupational groups	36
6.4 National Statistics Socio-economic Classification (NS-SeC)	38
Section 7. Travel to work	42
7.1 Method of travel to work.....	42

Introduction

This report compares 2001 and 2011 Census results for Warrington.

The report has been produced by the Local Authorities within the Cheshire & Warrington Research and Intelligence Collaborative (CWRIC) as part of a suite of products to help inform people of the main results from the 2011 Census. The full range of 2011 Census products for each of the Local Authorities in the CWRIC area includes:

- A 2011 Census Ward Atlas with maps and tables comparing and ranking wards
- A range of Spotlight reports
- Six profiles exploring a number of themes at a range of different geographies, including Local Authorities, Wards, Clinical Commissioning Groups (CCGs), Local Enterprise Partnership area (LEP), the CWRIC area, Localities (in Cheshire West & Chester), Local Area Partnerships (in Cheshire East) and Neighbourhoods (in Warrington).

The 2011 Census products and 2011 Census tables are also available via <http://www.nomisweb.co.uk/census/2011>.

Differences between 2011 and 2001

The main difference between the 2011 and 2001 Censuses is in the topics covered by the questionnaire. In 2011 there were eight new topics: bedrooms, type of central heating, second address, month and year of arrival in the UK, intended length of stay in the UK, national identity, passports held, and main household language.

Questions were also changed, removed or added in 2011 for the following reasons:

- To improve accuracy of data collected
- To reflect changes in user requirements
- To reduce the level of respondent burden, making the questionnaire easier to complete
- To reflect changes in society and / or legislation.

Comparability

The table below categorises the data used in this report as ‘fully comparable’ or ‘broadly comparable’ between Census 2001 and 2011:

‘Fully comparable’ means that data in the 2011 tables can be directly compared with their 2001 equivalents.

‘Broadly comparable’ means that the 2011 data are not exactly the same as those from 2001. The question wording may have been different, response options may have changed, or underlying classifications may have been re-designed (e.g. industry and occupation). Broad comparisons of the statistics can be made with 2001 by combining response categories or observing general trends over time.

Changes have been noted beneath each table within the report and, where relevant, additional points of interest have been identified. For further information on questionnaire comparability please see the ONS comparability report:

<http://www.ons.gov.uk/ons/guide-method/census/2011/census-data/2011-census-user-guide/comparability-over-time/2011-2001-census-questionnaire-comparability.pdf>.

Table Number		2011 Table Title	Comparability
2011	2001		
1. Population			
KS101EW	KS001	Usual resident population	Broadly comparable
KS102EW	KS002	Age structure of population	Broadly comparable
KS103EW	KS004	Marital and civil partnership status	Broadly comparable
2. Ethnicity, identity, language and religion			
KS201EW	KS006	Ethnic group	Broadly comparable
KS204EW	KS005	Country of birth	Fully comparable
KS209EW	KS007	Religion	Fully comparable
KS205EW	New	Passports held ¹	New question
KS206EW	New	Household language ¹	New question
3. Health			
KS301EW	KS008	Health and provision of unpaid care	Broadly comparable
4. Housing and accommodation			
KS401EW	KS016	Dwellings, household spaces and accommodation type	Fully comparable
KS402EW	KS018	Tenure	Fully comparable

KS403EW	KS019	Rooms, bedrooms and central heating	Broadly comparable
KS105EW	KS020	Household composition	Broadly comparable
KS404EW	KS017	Car or van availability	Fully comparable
5. Qualifications			
KS501EW	KS013	Qualifications and students	Broadly comparable
6. Labour market			
KS601EW	KS009 a	Economic activity	Fully comparable
KS608EW	KS012 a	Occupation	Broadly comparable
KS611EW	KS014 a	NS-SeC	Fully comparable
7. Travel to Work			
CT0015	UV39	Method of travel to work	Fully comparable

¹ Analysis of this new question for 2011 will be provided in the Spotlight report due for publication in 2014.

Section 1: Population

This section explores population change in Warrington from 2001 to 2011.

1.1 Population density	2011	2001	2001 - 2011 Change
Area (hectares)	18,065	18,100	Not a-
Persons per hectare	11.2	10.6	Not a-

Source: 2011 Census table, KS101EW: Usual resident population. 2001 Census table KS001: Mid-2001 revised population estimates. © Crown Copyright 2014. Office for National Statistics licensed under the Open Government License v1.0.

Note: This question is fully comparable between 2001 and 2011.

1.2 Resident population	2011		2001		2001 - 2011 Change	
	All usual residents	% All usual residents	All usual residents	% All usual residents	Number	%
All usual residents	202,228	100.0	191,202	100.0	11,026	5.8
Male	100,300	49.6	93,968	49.1	6,332	6.7
Female	101,928	50.4	97,234	50.9	4,694	4.8
In households	198,828	98.3	187,997	98.4	10,831	5.8
In communal establishments	3,400	1.7	3,083	1.6	317	10.3

Source: 2011 Census table, KS101EW: Usual resident population. Mid-2001 revised population estimates. Crown Copyright 2014. Office for National Statistics licensed under the Open Government License v1.0.

Note: 2001 figures for males and females are based upon mid-year 2001 revised estimates. All usual residents in households and communal establishments are based upon 2001 Census. This question is fully comparable between 2001 and 2011.

The number of persons per hectare in Warrington increased from 10.6 in 2001 to 11.2 in 2011.

The usual resident population of Warrington was 202,228 in 2011.

The usual resident population grew by 11,026 between 2001 and 2011, an increase of 5.8%.

The population living in households in Warrington increased by 10,831 between 2001 and 2011. This equates to an increase of 5.8%.

In 2011 there were 317 more people living in communal establishments in Warrington compared with 2001. This is equivalent to a rise of 10.3%.

1.3 Age Structure	2011		2001		2001 – 2011 Change	
	All usual residents	% All usual residents	All usual residents	% All usual residents	Number	%
All usual residents	202,228	100.0	191,202	100.0	11,026	5.8
0 to 4	12,309	6.1	11,621	6.1	688	5.9
5 to 9	11,555	5.7	12,537	6.6	-982	-7.8
10 to 14	12,296	6.1	13,107	6.9	-811	-6.2
15 to 19	12,507	6.2	11,719	6.1	788	6.7
20 to 24	12,088	6.0	9,753	5.1	2,335	23.9
25 to 29	12,503	6.2	11,766	6.2	737	6.3
30 to 34	12,185	6.0	15,198	7.9	-3,013	-19.8
35 to 39	14,120	7.0	16,714	8.7	-2,594	-15.5
40 to 44	16,022	7.9	14,291	7.5	1,731	12.1
45 to 49	16,591	8.2	12,655	6.6	3,936	31.1
50 to 54	13,569	6.7	13,507	7.1	62	0.5
55 to 59	11,828	5.8	11,393	6.0	435	3.8
60 to 64	12,441	6.2	9,818	5.1	2,623	26.7
65 to 69	9,980	4.9	7,986	4.2	1,994	25.0
70 to 74	8,218	4.1	6,885	3.6	1,333	19.4
75 to 79	6,007	3.0	5,607	2.9	400	7.1
80 to 84	4,287	2.1	3,734	2.0	553	14.8
85+	3,722	1.8	2,911	1.5	811	27.9

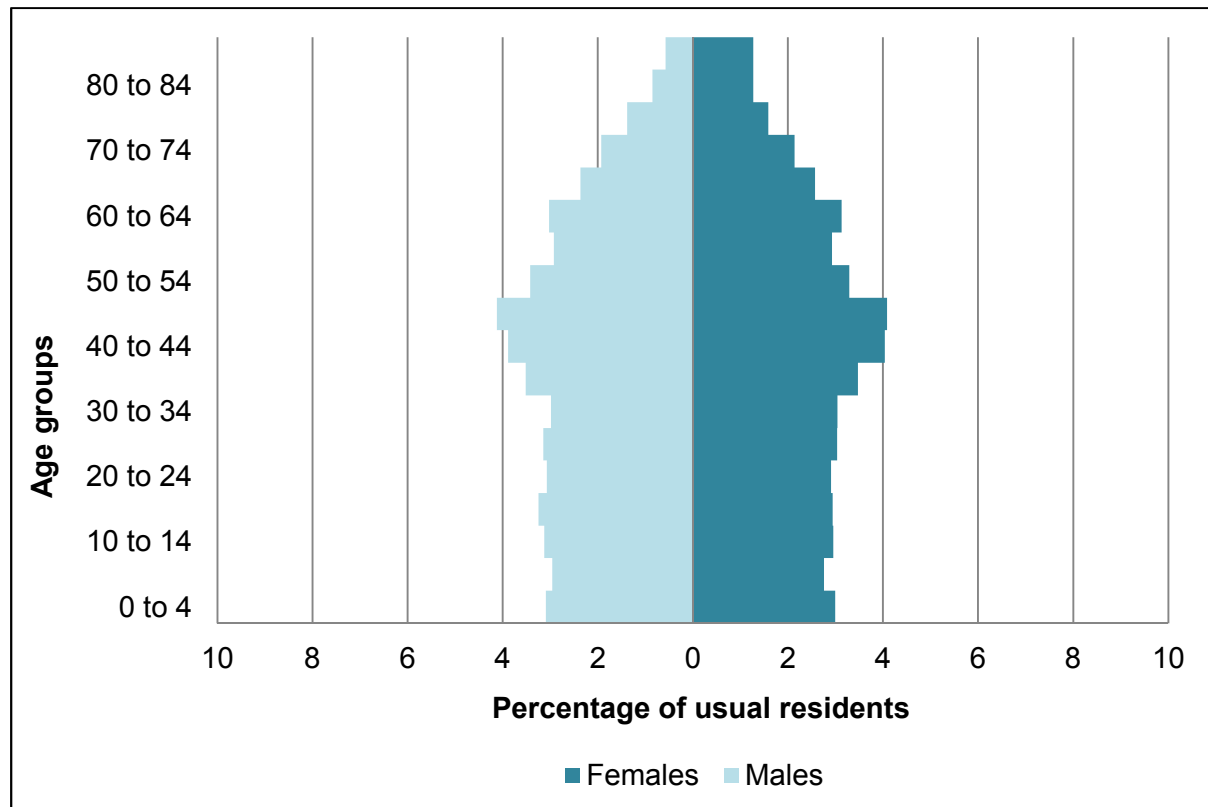
Source: 2011 Census table, DC1117EW: Sex by single year of age. Mid-2001 revised population estimates. © Crown Copyright 2014. Office for National Statistics licensed under the Open Government License v1.0. This question is fully comparable between 2001 and 2011.

In common with other areas of the country, there were more older people living in Warrington in 2011 compared with 2001. The number of usual residents aged 85 years and older increased by 811 between 2001 and 2011, representing growth of 27.9%.

The largest proportional growth in Warrington was seen in the number of people aged 45 to 49, which increased by 3,936 individuals or 31.1%.

The largest population decline was seen in people aged 30 to 34. The number of usual residents of this age in Warrington decreased by 3,013 between 2001 and 2011, equivalent to a reduction of 19.8%.

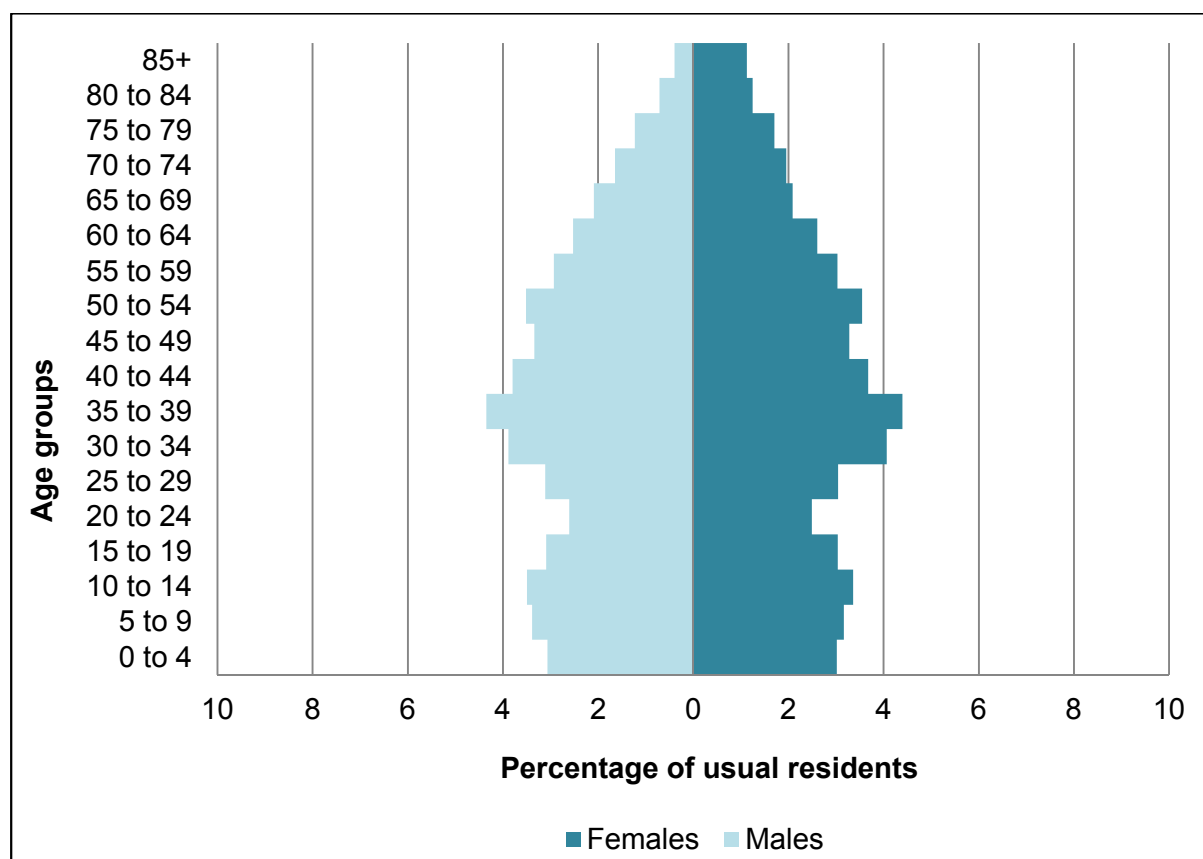
Chart 1.3a 2011 Population Pyramid by 5-year Age groups



Source: 2011 Census table, DC1117EW: Sex by single year of age. Office for National Statistics licensed under the Open Government License v1.0.

The largest age group in Warrington in 2011 was 45 to 49 year olds, which accounted for 8.2% of all usual residents. This was followed by the 40 to 44 age group, which accounted for 7.9% of residents.

Chart 1.3b 2001 Population Pyramid by 5-year Age groups



Source: Mid-2001 revised population estimates. © Crown Copyright 2014. Office for National Statistics licensed under the Open Government License v1.0.

The largest age group in 2001 was 35 to 39 year olds, which accounted for 8.7% of all usual residents. The second-largest age group was 30 to 34 year olds, which accounted for 7.9% of residents.

1.4 Marital and civil partnership status	2011		2001		2001 – 2011 change	
	Number	%	Number	%	Number	%
All usual residents aged 16+	163,477	100.0	151,269	154.8	12,208	8.1
Single (never married or never registered a same-sex civil partnership)	51,409	31.4	40,853	27.0	10,556	25.8
Married / re-married:	81,175	49.7	82,810	54.7	-1,635	-2.0
Married	81,175	49.7	71,137	47.0	10,038	14.1

Re-married	not a-	not a-	11,673	7.7	Not a-	Not a-
In a registered same-sex civil partnership	241	0.1	Not a-	Not a-	Not a-	Not a-
Separated (but still legally married or still legally in a same-sex civil partnership)	3,855	2.4	3,218	2.1	637	19.8
Divorced or formerly in a same-sex civil partnership which is now legally dissolved	15,407	9.4	12,397	8.2	3,010	24.3
Widowed or surviving partner from a same-sex civil partnership	11,390	7.0	11,991	7.9	-601	-5.0

Source: 2011 Census table, KS103EW: Marital and civil partnership status. 2001 Census table, KS004: Marital status. Office for National Statistics licensed under the Open Government License v1.0.

Notes: This question is broadly comparable between 2001 and 2011. Due to the inclusion of same-sex civil partnerships, the 2011 data is different from 2001 but broad comparisons can be made. New categories were introduced and 'Re-married' was removed. To allow comparison 'Married' in 2011 is compared to 'Married' combined with 'Re-married' in 2001.

Population growth in Warrington has taken place predominantly amongst single people (those who have never married or never registered a same-sex civil partnership). This proportion of the population increased by 10,556 between 2001 and 2011, representing growth of 25.8%.

The next highest growth was in the proportion of usual residents aged 16 or more who were divorced or had had a same-sex civil partnership legally dissolved. This figure increased by 3,010 or 24.3%.

In numeric terms the greatest decline in 2011 was seen in the number of usual residents aged 16 and over who were married or re-married (a reduction of 1,635 or 2.0%). The number of residents who were widowed or were the surviving partner of a same-sex civil partnership decreased by 601, or 5.0%.

Section 2: Ethnicity, Identity, Language and Religion

This section explores changes in ethnicity, country of birth and religion between 2001 and 2011. Questions on Language and Passports Held have not been included as these were new in 2011 and no comparison can be made.

2.1 Ethnic groups	2011		2001		2001 – 2011 change	
	All usual residents	% All usual residents	All usual residents	% All usual residents	Number	%
All usual residents	202,228	100.0	191,080	100.0	11,148	5.8
White:	193,992	95.9	85,261	97.0	8,731	4.7
English / Welsh / Scottish / Northern Irish / British	187,968	92.9	183,676	96.1	4,292	2.3
Irish	1,357	0.7	1,585	0.8	-228	-14.4
Gypsy or Irish Traveller ¹	66	0.0	Not a-	Not a-	Not a-	Not a-
Other white	4,601	2.3	1,735	0.9	2,866	165.2
White Non British	6,024	3.0	3,320	1.7	2,638	23.7
Mixed/multiple ethnic groups:	2,144	1.1	1,144	0.6	1,000	87.4
White and Black Caribbean	654	0.3	336	0.2	318	94.6
White and Black African	357	0.2	176	0.1	181	102.8
White and Asian	663	0.3	357	0.2	306	85.7
Other mixed	470	0.2	275	0.1	195	70.9
Asian/Asian British:	4,911	2.4	2,328	1.2	2,583	111.0
Indian	1,803	0.9	676	0.4	1,127	166.7
Pakistani	1,179	0.6	673	0.4	506	75.2
Bangladeshi	152	0.1	73	0.0	79	108.2

Chinese ²	849	0.4	729	0.4	120	16.5
Other Asian ²	928	0.5	177	0.1	751	424.3
Black/African/ Caribbean/Black British:	694	0.3	363	0.2	331	91.2
African	389	0.2	169	0.1	220	130.2
Caribbean	214	0.1	160	0.1	54	33.8
Other Black	91	0.0	34	0.0	57	167.6
Other ethnic group:	487	0.2	249	0.1	238	95.6
Arab ¹	237	0.1	Not a-	Not a-	Not a-	Not a-
Any other ethnic group	250	0.1	249	0.1	1	0.4

¹ No comparable data exists for these ethnic groups in the 2001 Census

² Comparability issues exist between these ethnic groups for the 2001 and 2011 Census

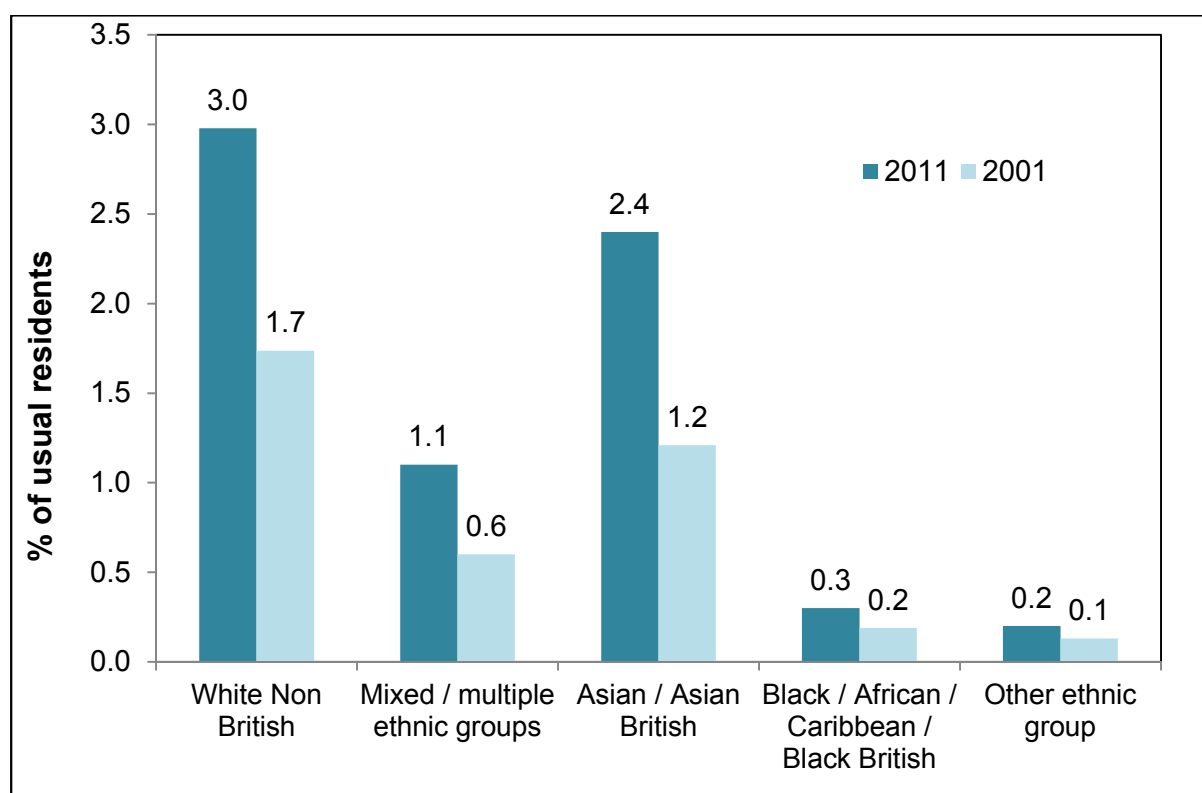
Source: 2011 Census table, KS201EW: Ethnic groups. 2001 Census table, KS006: Ethnic groups. Office for National Statistics licensed under the Open Government License v1.0.

Notes: This question is broadly comparable between 2001 and 2011. Changes were made to the responses including the introduction of the groups 'Gypsy/Irish Traveller' and 'Arab'. The category of 'White Non-British' has been derived from other variables within the table.

95.9% of Warrington residents in 2011 were from White ethnic groups, a reduction of 4.7% since 2001.

Over the same period there was an increase of 4,292 (2.3%) in the number of Warrington residents classing themselves within ethnic groups from the United Kingdom.

Chart 2.1 Minority Ethnic Groups in Warrington for 2001 and 2011



Source: 2011 Census table, KS201EW: Ethnic groups. 2001 Census table, KS006: Ethnic groups. Office for National Statistics licensed under the Open Government License v1.0.

The number of usual residents categorised as 'White Non British' increased by 1,000 between 2001 and 2011, representing growth of 87.4%.

In proportionate terms, the highest rate of growth in 2011 was seen in residents of Chinese ethnic background. This group grew by 751 individuals compared with 2001, representing an increase of 424.3%.

2.2 Country of birth	2011		2001		2001 to 2011 Change	
	All usual residents	% All usual residents	All usual residents	% All usual residents	Number	%
All Usual Residents	202,228	100.0	191,080	100.0	11,148	5.8
Within UK:	190,719	94.3	184,737	96.7	5,982	3.2
England	184,877	91.4	178,398	93.4	6,479	3.6
Northern Ireland	907	0.4	943	0.5	-36	-3.8
Scotland	2,769	1.4	3,096	1.6	-327	-10.6

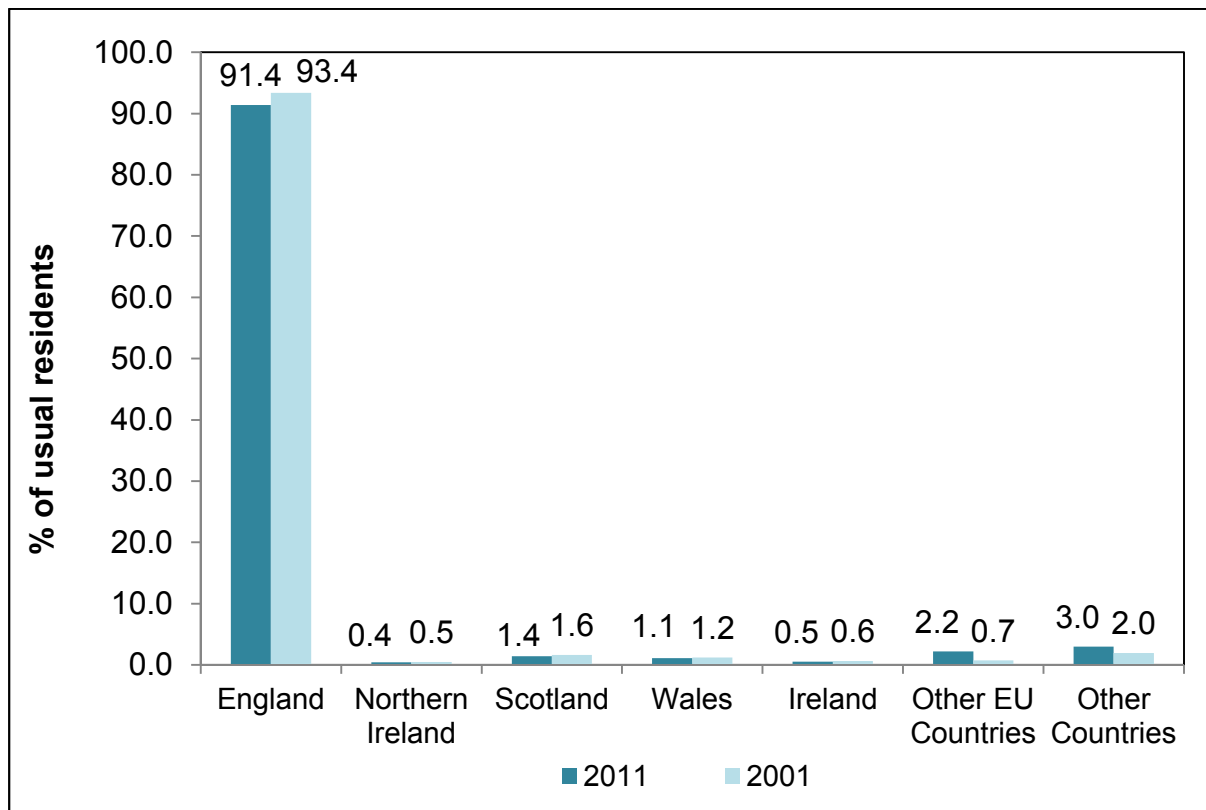
Wales	2,146	1.1	2,300	1.2	-154	-6.7
UK not Otherwise Specified	20	0.0	Not a-	Not a-	Not a-	Not a-
Ireland	1,090	0.5	1,224	0.6	-134	-10.9
Other EU Countries:	4,369	2.2	1,395	0.7	2,974	213.2
Member Countries in March 2001	1,353	0.7	Not a-	Not a-	Not a-	Not a-
Accession Countries April 2001 to March 2011	3,016	1.5	Not a-	Not a-	Not a-	Not a-
Other Countries	6,050	3.0	3,724	2.0	2,326	62.5
Outside UK	11,509	5.7	6,343	3.3	5,166	81.4

Source: 2011 Census table, KS204EW: Country of birth. 2001 Census table, KS005: Country of birth. Office for National Statistics licensed under the Open Government License v1.0.

Note: This question is fully comparable between 2001 and 2011. However the categories 'UK not otherwise specified', 'Other EU; Member countries April in March 2001', 'Other EU; Accession countries April 2001 to March 2011' are additional categories in 2011. The categories of 'United Kingdom' and 'Born outside UK' have been derived from other groups within the table.

In 2011 nine out of ten Warrington residents were born in the UK (94.3% compared with 96.7% in 2001).

Chart 2.2a Percentage of Residents by Country of Birth for 2001 and 2011

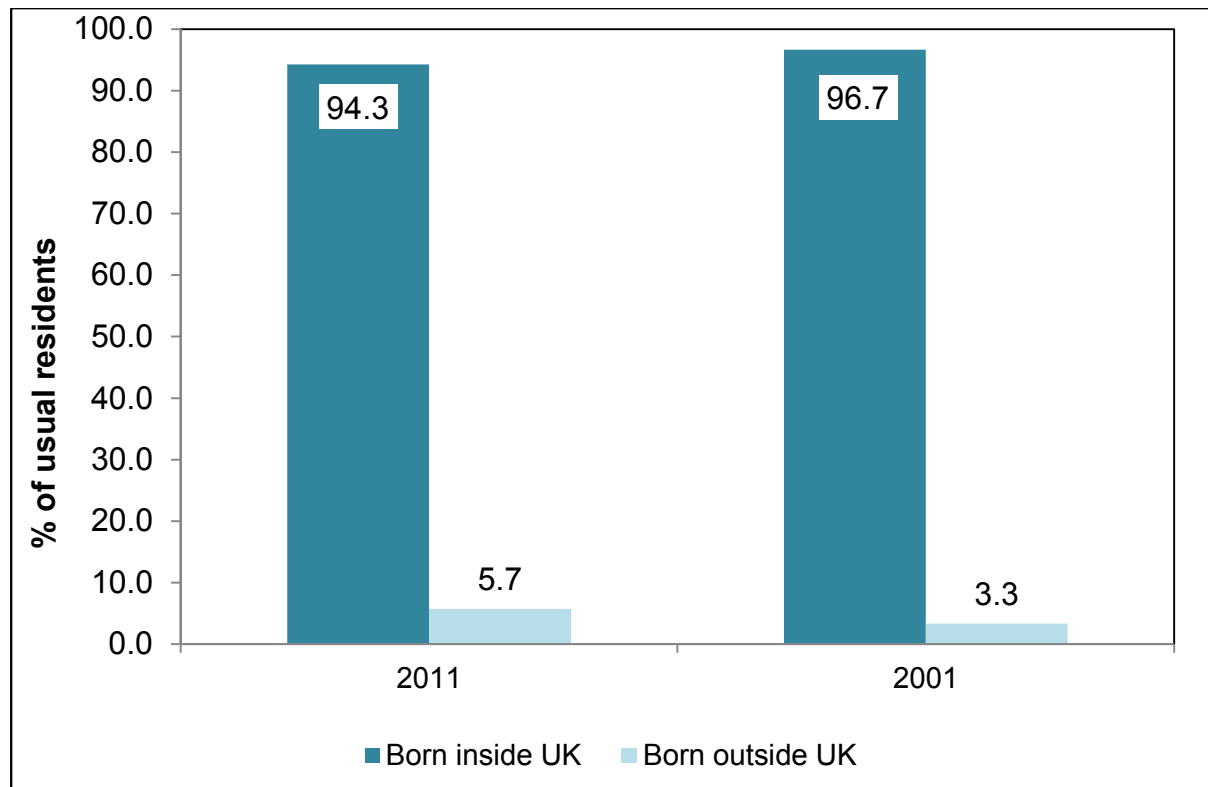


Source: 2011 Census table, KS204EW: Country of birth. 2001 Census table, KS005: Country of birth. Office for National Statistics licensed under the Open Government License v1.0.

In 2011 a total of 11,509 Warrington residents were born outside the UK (5.7% of usual residents), representing an increase of 5,166 residents (81.4%) since 2001.

The highest rate of growth has taken place in residents born in 'Other EU countries'. This group increased by 2,974 to reach 4,369 residents in 2011, and now accounts for 2.2% of usual residents (i.e. those intending to stay in the UK for more than 12 months).

Chart 2.2b Percentage of Residents born Inside or Outside the UK for 2001 and 2011



Source: 2011 Census table, KS204EW: Country of birth. 2001 Census table, KS005: Country of birth. Office for National Statistics licensed under the Open Government License v1.0.

2.3 Religion	2011		2001		2001 – 2011 change	
	All usual residents	% All usual residents	All usual residents	% All usual residents	Number	%
All usual residents	202,228	100.0	191,080	100.0	11,148	5.8
Christian	144,405	71.4	156,747	82.0	-12,342	-7.9
Buddhist	457	0.2	232	0.1	225	97.0
Hindu	1,118	0.6	366	0.2	752	205.5
Jewish	147	0.1	120	0.1	27	22.5
Muslim	2,097	1.0	1,109	0.6	988	89.1
Sikh	361	0.2	267	0.1	94	35.2
Other religions	513	0.3	265	0.1	248	93.6
No religion	41,293	20.4	19,600	10.3	21,693	110.7
Religion not stated	11,837	5.9	12,374	6.5	-537	-4.3

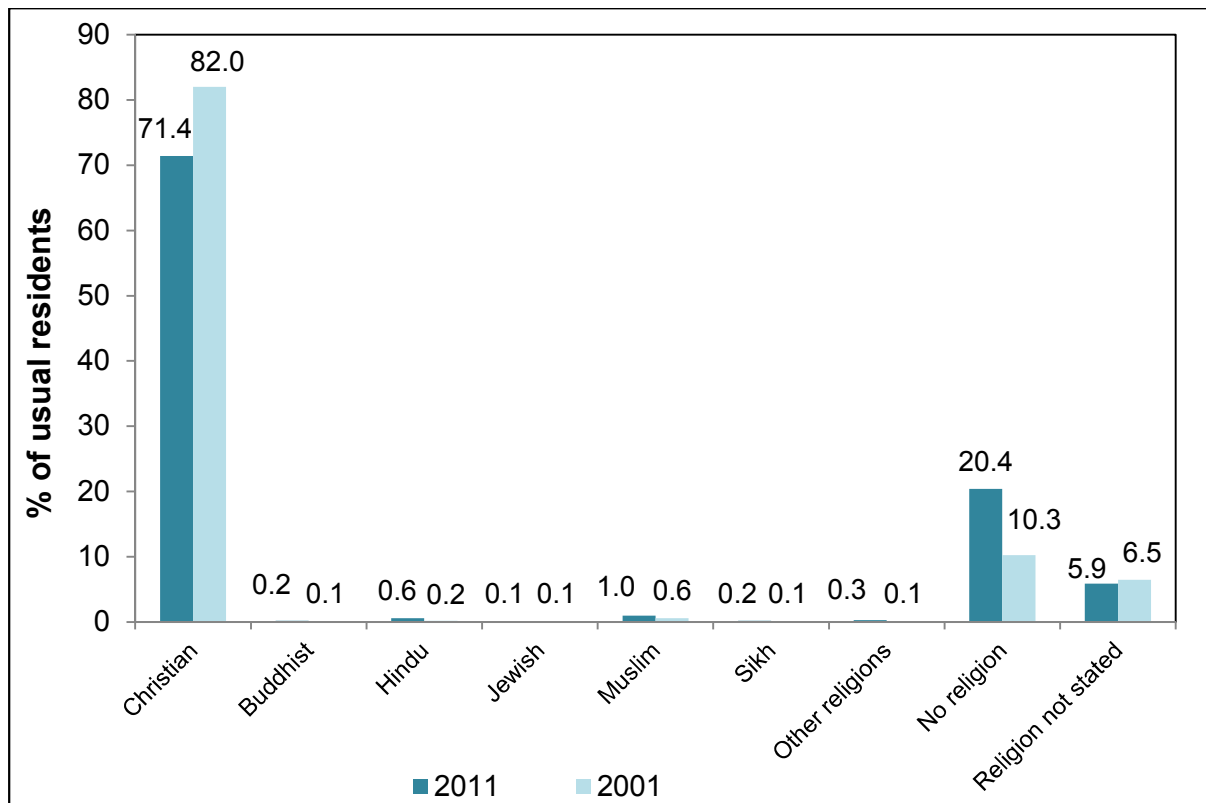
Source: 2011 Census table, KS209EW: Religion. 2001 Census table, KS007: Religion. Office for National Statistics licensed under the Open Government License v1.0.

Note: This question is fully comparable between 2001 and 2011

In 2011 the majority of Warrington residents were of Christian religion (71.4% compared with 82.0% in 2001). The figure declined by 12,342 individuals between the two censuses (7.9%).

20.4% of residents (41,293 individuals) stated that they were of 'No religion' in 2011. This represented an increase of 21,693 residents since 2001.

Chart 2.3 Percentage of Usual Residents by Religion for 2001 and 2011



Source: 2011 Census table, KS209EW: Religion. 2001 Census table, KS007: Country of birth. Office for National Statistics licensed under the Open Government License v1.0.

Section 3: Health

This section explores changes in self-reported health amongst Warrington residents.

3.1 General health	2011		2001		2001 – 2011 change	
	All usual residents	%	All usual residents	%	Number	%
All usual residents	202,228	100.0	191,080	100.0	11,148	5.8
In good or very good health:	166,957	82.6	134,879	70.6	32,078	23.8
Very good health	100,734	49.8	Not a-	Not a-	Not a-	Not a-
Good health	66,223	32.7	134,879	70.6	-68,656	-50.9
Not in good health:	35,271	17.4	56,201	29.4	-20,930	-37.2
Fair health / Fairly good health	24,446	12.1	38,887	20.4	-14,441	-37.1
Bad health / Not in good health	8,466	4.2	17,314	9.1	-8,848	-51.1
Very bad health	2,359	1.2	Not a-	Not a-	Not a-	Not a-

Source: 2011 Census table, KS301EW: Health and Provision of Unpaid Care. 2001 Census table, KS008: Health and Provision of Unpaid Care. Office for National Statistics licensed under the Open Government License v1.0.

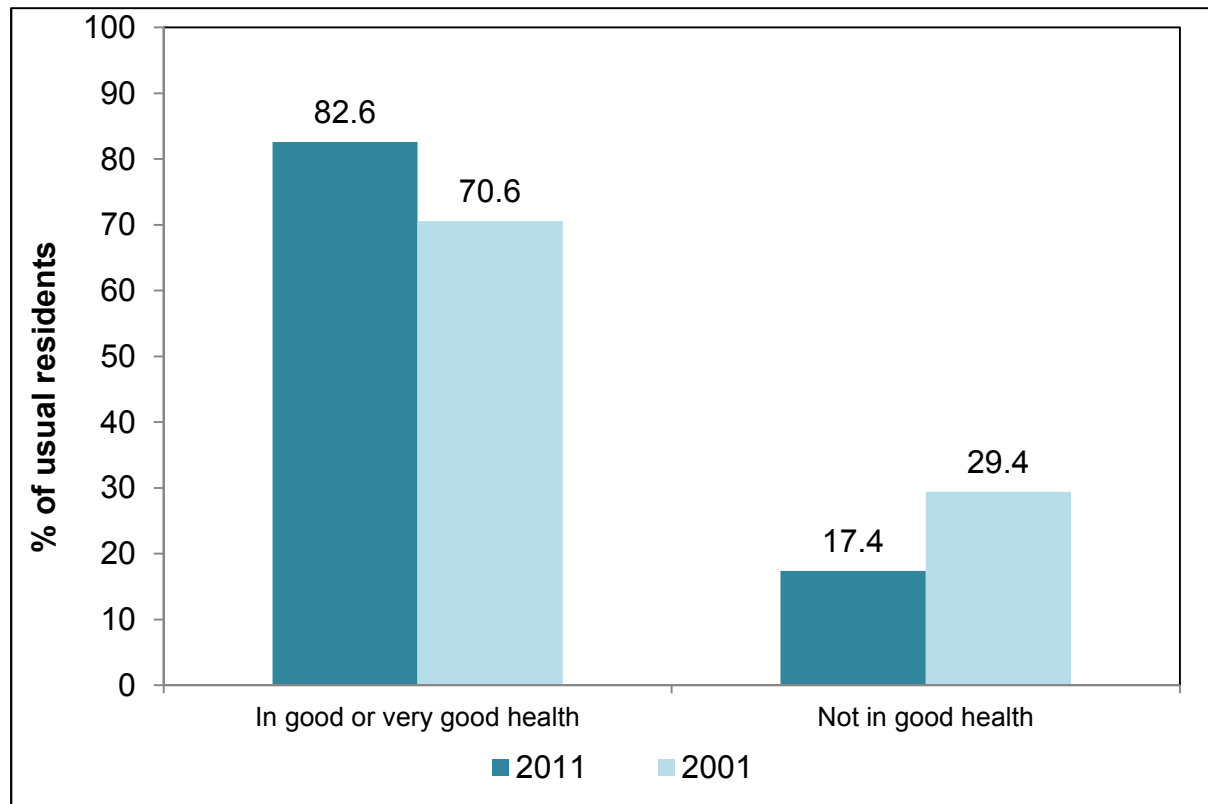
Note: This question is broadly comparable between 2001 and 2011. The 2011 categories of 'Very good' and 'Good' health have been aggregated to allow comparison with the 2001 category of 'Good' health. The 2011 categories of 'Fair health', 'Bad health' and 'Very bad health' have been aggregated into 'Not in good health' and the 2001 categories of 'Fairly good health' and 'Not in good health' have been aggregated into 'Not in good health' to allow comparison.

More information around comparability between 2001 and 2011 Census health questions can be found in Health Statistics Quarterly No. 41 on the ONS website via <http://www.ons.gov.uk/ons/rel/hsq/health-statistics-quarterly/no--41--spring-2009/index.html>

Perceptions of health are improving in Warrington. The number of usual residents reporting that they are in good or very good health increased between 2001 and 2011 by 32,078 (23.8%).

Over the same period the number of usual residents who reported that they are not in good health decreased by 20,930, representing a reduction of 37.2%.

Chart 3.1 Percentage of Usual Residents by General Health for 2001 and 2011



Source: 2011 Census table, KS301EW: Health and Provision of Unpaid Care. 2001 Census table, KS008: Health and Provision of Unpaid Care. Office for National Statistics licensed under the Open Government License v1.0.

3.2 Day-to-day activities limited	2011		2001		2001 – 2011 change	
	All usual residents	%	All usual residents	%	Number	%
All usual residents	202,228	100.0	191,080	100.0	11,148	5.8
Day-to-day activities limited ¹ :	34,997	17.3	Not a-	Not a-	Not a-	Not a-
Limited a lot	16,940	8.4	Not a-	Not a-	Not a-	Not a-
Limited a little	18,057	8.9	Not a-	Not a-	Not a-	Not a-
With limiting long-term illness	Not a-	Not a-	34,177	17.9	Not a-	Not a-

Day-to-day activities not limited	167,231	82.7	156,903	82.1	Not a-	Not a-
Day-to-day activities limited (age 16-64)	16,392	8.1	Not a-	Not a-	Not a-	Not a-

Source: 2011 Census table, KS301EW: Health and Provision of Unpaid Care. 2001 Census table, KS008: Health and Provision of Unpaid Care. Office for National Statistics licensed under the Open Government License v1.0.

Note: This question is broadly comparable between 2001 and 2011. The question wording for 2011 was changed to reflect the Disability Discrimination Act (DDA) 2005 definition of disability. In 2011 respondents were asked if their day-to-day activities were 'Limited a lot', 'Limited a little' or were not limited by a condition expected to last for at least 12 months, whereas in 2001 they were asked if they had a long-term condition which limited their daily activities.

The number of usual residents limited in their day to day activities increased by 820 between 2001 and 2011, representing an increase of 2.4%.

Due to the increase in the size of the Warrington population, there has been no change to the proportion of usual residents who find their day-to-day activities limited.

3.3 Provision of unpaid care	2011		2001		2001 – 2011 change	
	All usual residents	%	All usual residents	%	Number	%
All usual residents	202,228	100.0	191,080	100.0	11,148	5.8
People who provide unpaid care:						
1-19 hours per week	13,862	6.9	13,562	7.1	300	2.2
20-49 hours per week	2,837	1.4	2,304	1.2	533	23.1
50+ hours per week	5,144	2.5	4,110	2.2	1,034	25.2

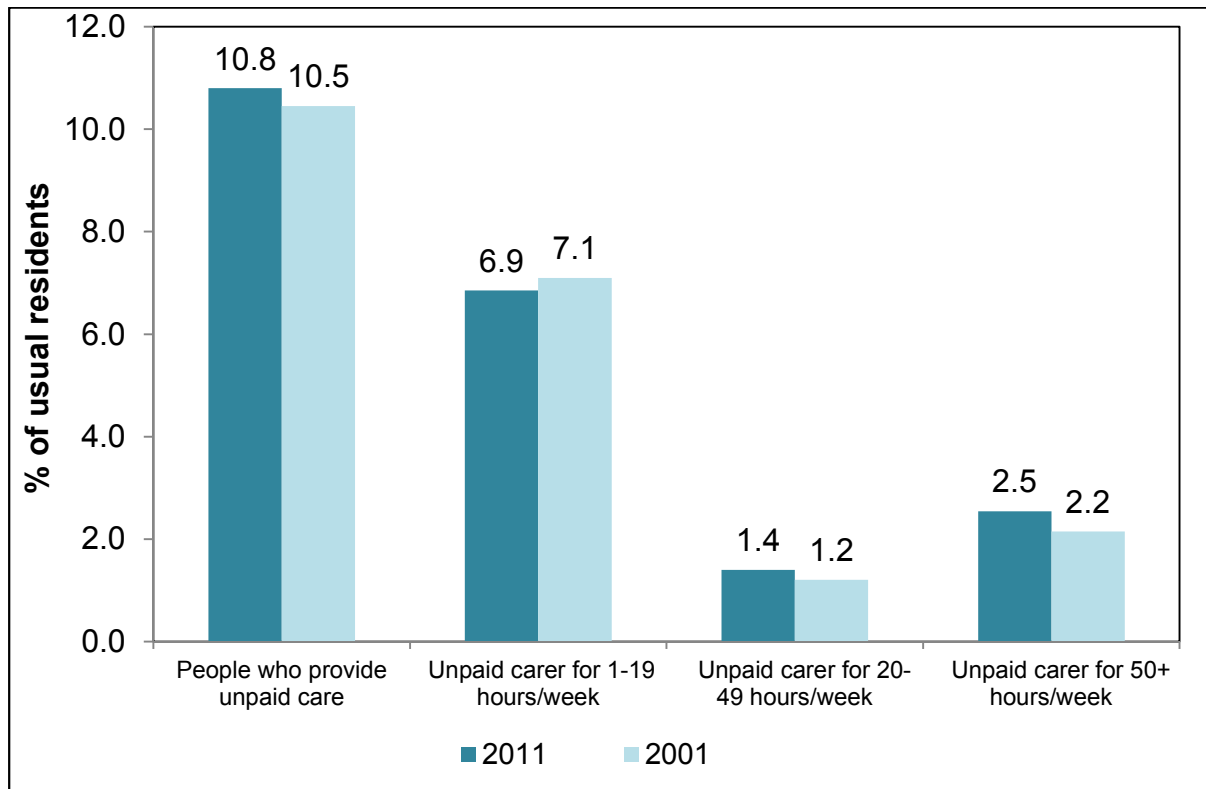
Source: 2011 Census table, KS301EW: Health and Provision of Unpaid Care. 2001 Census table, KS008: Health and Provision of Unpaid Care. Office for National Statistics licensed under the Open Government License v1.0.

Note: This question is fully comparable between 2001 and 2011.

The number of Warrington's usual residents providing unpaid care increased by 1,867 (equivalent to growth of 9.3%) between 2001 and 2011.

The number of usual residents who provide unpaid care for over 50 hours per week increased by 1,034 between 2001 and 2011, representing an increase of 25.2%.

Chart 3.3 Percentage of Usual Residents by Provision of Unpaid Care for 2001 and 2011



Source: 2011 Census table, KS301EW: Health and Provision of Unpaid Care. 2001 Census table, KS008: Health and Provision of Unpaid Care. Office for National Statistics licensed under the Open Government License v1.0.

Section 4: Housing and Accommodation

This section explores changes in housing in Warrington between 2001 and 2011.

4.1a Household spaces	2011		2001		2001 – 2011 change	
	Household spaces	% Spaces	Household spaces	% Spaces	Number	%
All Household spaces:	87,962	100.0	79,980	100.0	7,982	10.0
With at least one usual resident	85,140	96.8	78,030	97.6	7,110	9.1
With no usual residents	2,822	3.2	1,950	2.4	872	44.7

Source: 2011 Census table, KS401EW: Dwellings, Household Spaces and Accommodation. 2001 Census table, KS016: Household Spaces and Accommodation Type. Office for National Statistics licensed under the Open Government License v1.0.

Note: This question is fully comparable between 2001 and 2011.

There was an increase of 10% in the number of household spaces in Warrington in the ten years between the two censuses. By 2011 there were 7,982 additional household spaces within the borough.

Between 2001 and 2011 the number of household spaces with at least one usual resident (i.e. residents intending to stay in the UK for longer than 12 months) rose by 7,110. This represents an increase of 9.1%.

The number of empty household spaces available for residents intending to stay in the UK for up to 12 months increased by 44.7% between the two censuses. In 2011 there were 2,822 such empty household spaces within Warrington.

4.1b Average household size	2011			2001		
	Household spaces	Population	Average household size	Household spaces	Population	Average household size
	87,962	202,228	2.3	79,980	191,202	2.4

Source: 2011 Census tables, KS401EW: Dwellings, Household Spaces and Accommodation and KS403EW: Rooms, Bedrooms and Central Heating. 2001 Census table, KS016: Household Spaces and Accommodation Type and KS019: Rooms, Amenities, Central Heating and Lowest Floor Level. Office for National Statistics licensed under the Open Government License v1.0.

Note: This question is fully comparable between 2001 and 2011.

The average household size in Warrington decreased from 2.4 residents in 2001 to 2.3 in 2011.

4.2 Accommodation type	2011		2001		2001 – 2011 change	
	Household spaces	% Spaces	Household spaces	% Spaces	Number	%
All household spaces	87,962	100.0	79,980	100.0	7,982	10.0
Whole house or bungalow:	78,011	88.7	73,133	91.4	4,878	6.7
Detached	20,826	23.7	19,465	24.3	1,361	7.0
Semi-detached	36,023	41.0	34,172	42.7	1,851	5.4
Terraced	21,162	24.1	19,496	24.4	1,666	8.5
Flat, maisonette or apartment:	9,870	11.2	6,705	8.4	3,165	47.2
Purpose-Built Block of Flats or Tenement	8,381	9.5	5,366	6.7	3,015	56.2
Part of a Converted or Shared House (Including Bed- Sits)	1,040	1.2	915	1.1	125	13.7
In Commercial Building	449	0.5	424	0.5	25	5.9
Caravan or other mobile / temporary structure	81	0.1	142	0.2	-61	-43.0

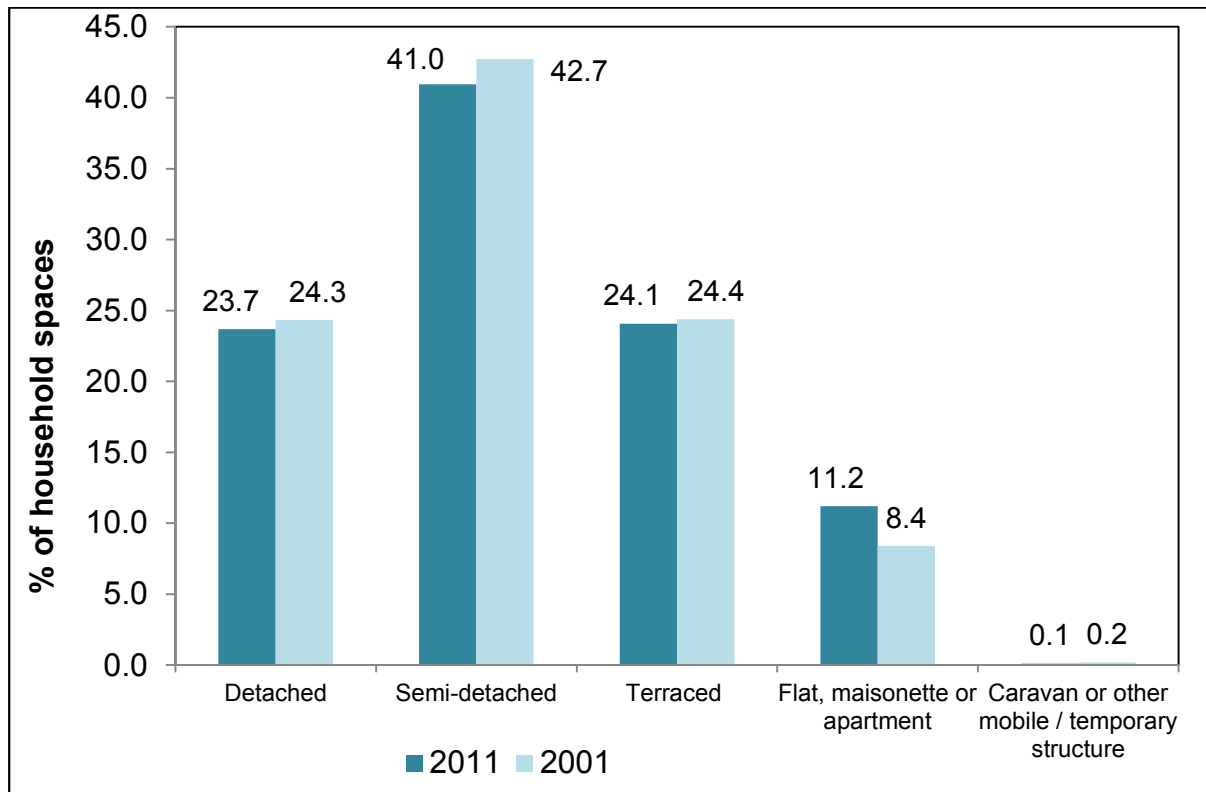
Source: 2011 Census table, KS401EW: Dwellings, Household Spaces and Accommodation. 2001 Census table, KS016: Household Spaces and Accommodation Type. Office for National Statistics licensed under the Open Government License v1.0.

Note: This question is fully comparable between 2001 and 2011.

The number of household spaces in Warrington classed as 'whole house or bungalow' increased by 4,878 between 2001 and 2011, representing an increase of 6.7%.

The number of household spaces classed as a 'flat, maisonette or apartment' increased by 3,165 between 2001 and 2011, representing an increase of 47.2%.

Chart 4.2 Percentage of Household Spaces by Accommodation Type for 2001 and 2011



Source: 2011 Census table, KS401EW: Dwellings, Household Spaces and Accommodation. 2001 Census table, KS016: Household Spaces and Accommodation Type. Office for National Statistics licensed under the Open Government License v1.0.

4.3 Tenure	2011		2001		2001 – 2011 change	
	Occupied Household spaces	% Occupied Spaces	Occupied Household spaces	% Occupied Spaces	Number	%
All occupied households	85,140	100	78,030	100	7,110	9.1
Owner occupied:	60,915	71.5	58,697	75.2	2,218	3.8
Owned outright	27,206	32.0	23,134	29.6	4,072	17.6
Owned with a mortgage or loan	33,709	39.6	35,563	45.6	-1,854	-5.2
Shared ownership (part-owned)	637	0.7	603	0.8	34	5.6

and part-rented)						
Rented from social landlord:	13,318	15.6	13,723	17.6	-405	-3.0
Council	6,147	7.2	9,496	12.2	-3,349	-35.3
Other	7,171	8.4	4,227	5.4	2,944	69.6
Rented from private landlord/Living rent-free:	10,270	12.1	5,007	6.4	5,263	105.1
Private Landlord / Letting agency	8,683	10.2	3,294	4.2	5,389	163.6
Other rented / Living rent-free	1,587	1.9	1,713	2.2	-126	-7.4

Source: 2011 Census table, KS402EW: Tenure. 2001 Census table, KS018: Tenure. Office for National Statistics licensed under the Open Government License v1.0.

Note: This question is broadly comparable between 2001 and 2011. In 2011 'Living rent-free' was a separate category, whereas in 2001 it was included within 'Private rented Other'. For 2011 'Living rent-free' has been combined with 'Rented Other' to allow comparison with 2001.

Since 2001 there have been significant changes in the provision of social housing, as much local authority provided housing has been transferred to Housing Trusts. The 'Right to Buy' policy has also meant that some social housing tenants have bought their properties, leading to an increase in owner occupied housing.

In 2011 there were 7,110 more occupied household spaces in the borough than in 2001, which represents a 9.1% increase.

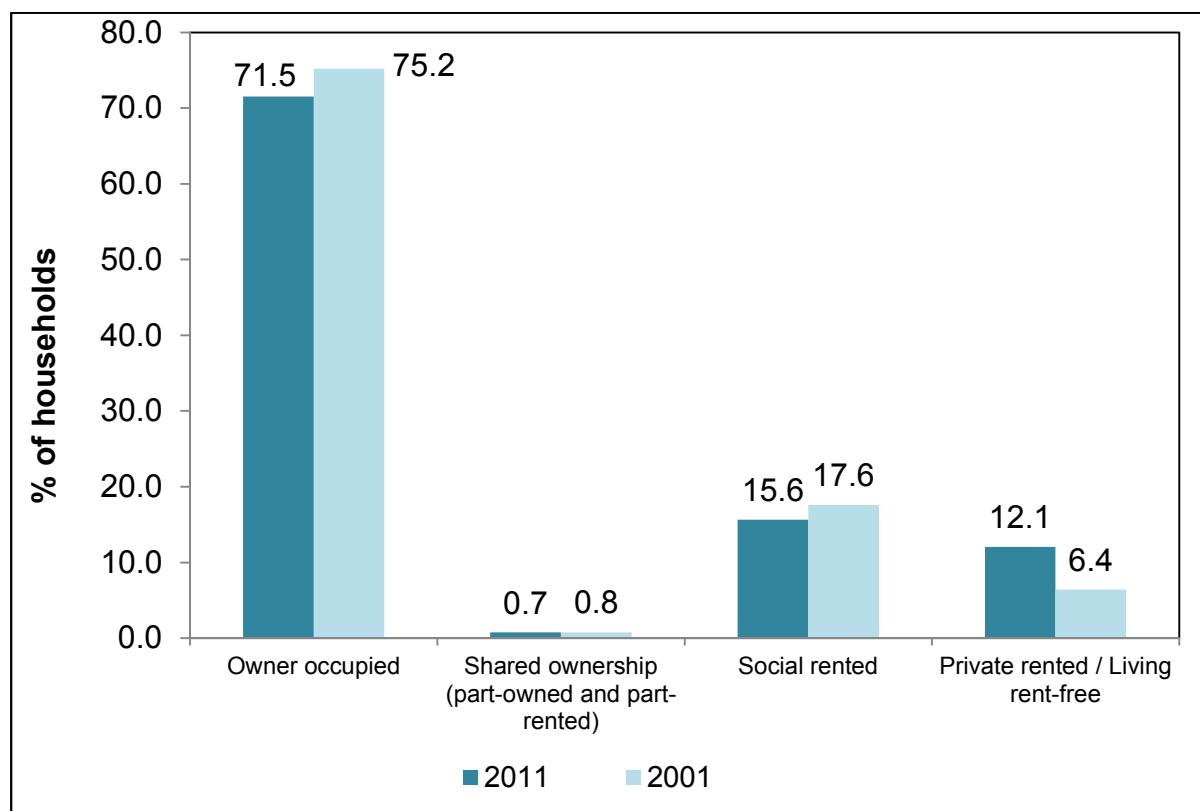
The number of owner-occupied household spaces increased by 2,218 between 2001 and 2011 (3.8%). In 2011 there were 4,072 more household spaces that were owned outright. As a proportion of all household spaces, however, owner-occupied spaces decreased from 75.2% to 71.5% in 2011.

The number of occupied household spaces rented from private landlords, or provided free of rent increased by 5,263 between 2001 and 2011. This is more than double the number of spaces of this type available in 2001.

In 2011 there were 405 fewer household spaces rented from social landlords in Warrington (a decline of 3.0% compared with 2001).

There were 3,349 fewer Council-owned spaces available in 2011 in comparison to 2001, representing a decrease of 35.3%. This reflects the transfer of Council housing stock to Golden Gates Housing Trust in 2010.

Chart 4.3: Percentage of Households by Tenure for 2001 and 2011



Source: 2011 Census table, KS402EW: Tenure. 2001 Census table, KS018: Tenure. Office for National Statistics licensed under the Open Government License v1.0.

4.4 Central heating	2011		2001		2001 – 2011 change	
	Occupied Household spaces	% Occupied Spaces	Occupied Household spaces	% Occupied Spaces	Number	%
All occupied households:	85,140	100	78,030	100	7,110	9.1
No central heating	1,910	2.2	7,322	9.4	-5,412	-73.9
With central heating	83,230	97.8	70,708	90.6	12,522	17.7

Source: 2011 Census table, KS403EW: Rooms, Bedrooms and Central Heating. 2001 Census table, KS019: Rooms, Amenities, Central Heating and Lowest Floor Level. Office for National Statistics licensed under the Open Government License v1.0.

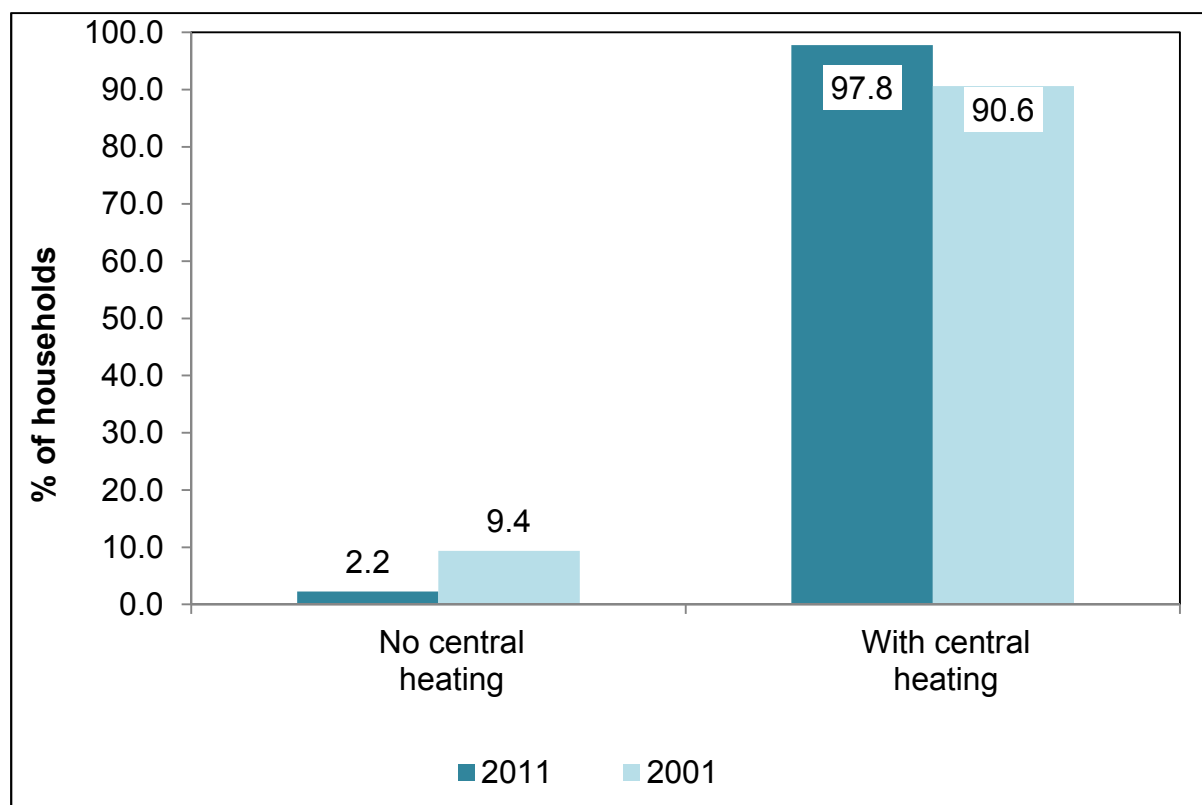
Note: This question is broadly comparable between 2001 and 2011. In 2001 provision of central heating was further categorised according to households with or without sole use of bath or shower. These categories have been aggregated to allow comparison with 2011.

97.8% of occupied Warrington households had central heating at the time of the 2011 Census, compared with 90.6% in 2001.

The number of occupied households without central heating in Warrington decreased between the censuses by 5,412, representing a reduction of 73.9%.

Over the same period the number of households with central heating increased by 12,522, equivalent to growth of 17.7%.

Chart 4.4: Percentage of Households with and without Central Heating for 2001 and 2011



Source: 2011 Census table, KS403EW: Rooms, Bedrooms and Central Heating. 2001 Census table, KS019: Rooms, Amenities, Central Heating and Lowest Floor Level. Office for National Statistics licensed under the Open Government License v1.0.

4.5 Household composition	2011		2001		2001 – 2011 change	
	Occupied Households	% Occupied Households	Occupied Households	% Occupied Households	Number	%
All Households	85,140	100.0	78,030	100.0	7,110	9.1
Single person household:	24,534	28.8	21,454	27.5	3,080	14.4
Aged 65+	9,862	11.6	10,062	12.9	-200	-2.0

Other	14,672	17.2	11,392	14.6	3,280	28.8
Single family household:	56,642	66.5	53,437	68.5	3,205	6.0
All aged 65 and over	7,077	8.3	6,558	8.4	519	7.9
Married or Same-sex Civil Partnership couple; no children	11,456	13.5	11,150	14.3	306	2.7
Married or Same-sex Civil Partnership couple; dependent children	14,785	17.4	16,296	20.9	-1,511	-9.3
Married or Same-sex Civil Partnership couple; all children non-dependent	5,297	6.2	5,638	7.2	-341	-6.0
Cohabiting couple; no children	4,641	5.5	3,586	4.6	1,055	29.4
Cohabiting couple; dependent children	3,783	4.4	2,768	3.5	1,015	36.7
Cohabiting couple; all children non-dependent	480	0.6	261	0.3	219	83.9
Lone parent; dependent children	6,220	7.3	4,762	6.1	1,458	30.6

Lone parent; all children non-dependent	2,903	3.4	2,418	3.1	485	20.1
Other household types:	3,964	4.7	3,139	4.0	825	26.3
With dependent children	1,489	1.7	1,299	1.7	190	14.6
All full-time students	57	0.1	13	0.0	44	338.5
All aged 65+	152	0.2	221	0.3	-69	-31.2
Other	2,266	2.7	1,606	2.1	660	41.1

Source: 2011 Census table, KS105EW: Household Composition. 2001 Census table, KS020: Household Composition. Office for National Statistics licensed under the Open Government License v1.0.

Notes: This question is broadly comparable with 2001. In 2011 people 'Aged 65 and over' are compared to those who were 'Pensioners' in 2001 (males aged 65+ and females aged 59+). Couples who in 2011 were classed as 'Married or same-sex Civil Partnership couple' are compared to 'Married couple households' from 2001. In 2011 'Other households: Full-time students' are compared with 'Other households: All students' from 2001.

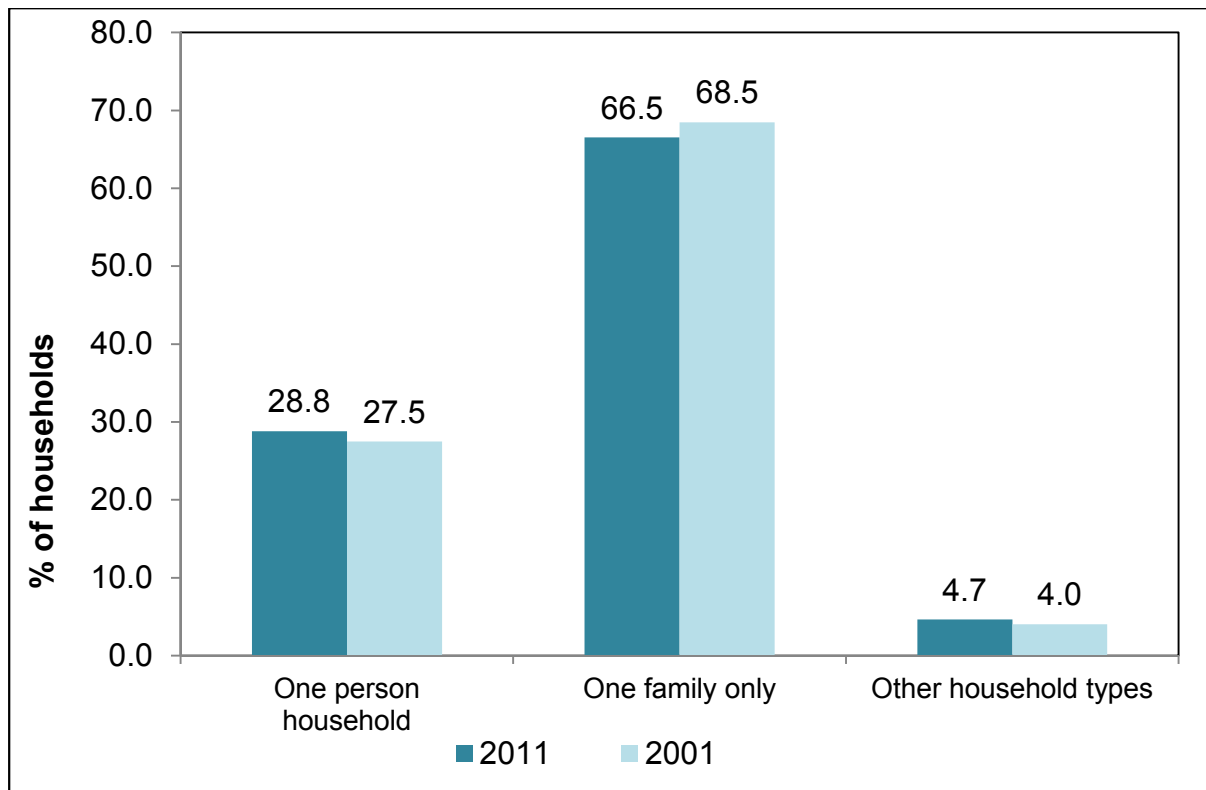
The number of single-person households in Warrington increased between 2001 and 2011 by 3,080, equivalent to growth of 14.4%.

In 2011, 66.5% of occupied households in Warrington were occupied by a single family, compared with 68.5% in 2001.

The number of single-family households increased between 2001 and 2011 by 3,205 (6.0%).

In 2011 there were 825 more households of 'other household types' in Warrington compared with 2001. This represents an increase of 26.3%.

Chart 4.5 Percentage of Households by Household Composition for 2001 and 2011



Source: 2011 Census table, KS105EW: Household Composition. 2001 Census table, KS020: Household Composition. Office for National Statistics licensed under the Open Government License v1.0.

4.6 Car or van ownership by household	2011		2001		2001 – 2011 change	
	Occupied Households	% Occupied Households	Occupied Households	% Occupied Households	Number	%
All households:	85,140	100.0	78,030	100.0	8,555	6.4
No car or van	16,409	19.3	16,307	20.9	-672	-2.5
1 car or van	35,587	41.8	33,853	43.4	1,551	2.7
2 cars or vans	26,623	31.3	23,108	29.6	4,488	11.5
3 or more cars or vans	5,049	5.9	3,811	4.9	2,182	29.5

4 or more cars or vans	1,472	1.7	951	1.2	1,006	47.8
------------------------	-------	-----	-----	-----	-------	------

Source: 2011 Census table, KS404EW: Car or Van Availability. 2001 Census table, KS017: Cars or Vans. Office for National Statistics licensed under the Open Government License v1.0.

Note: This question is fully comparable between 2001 and 2011.

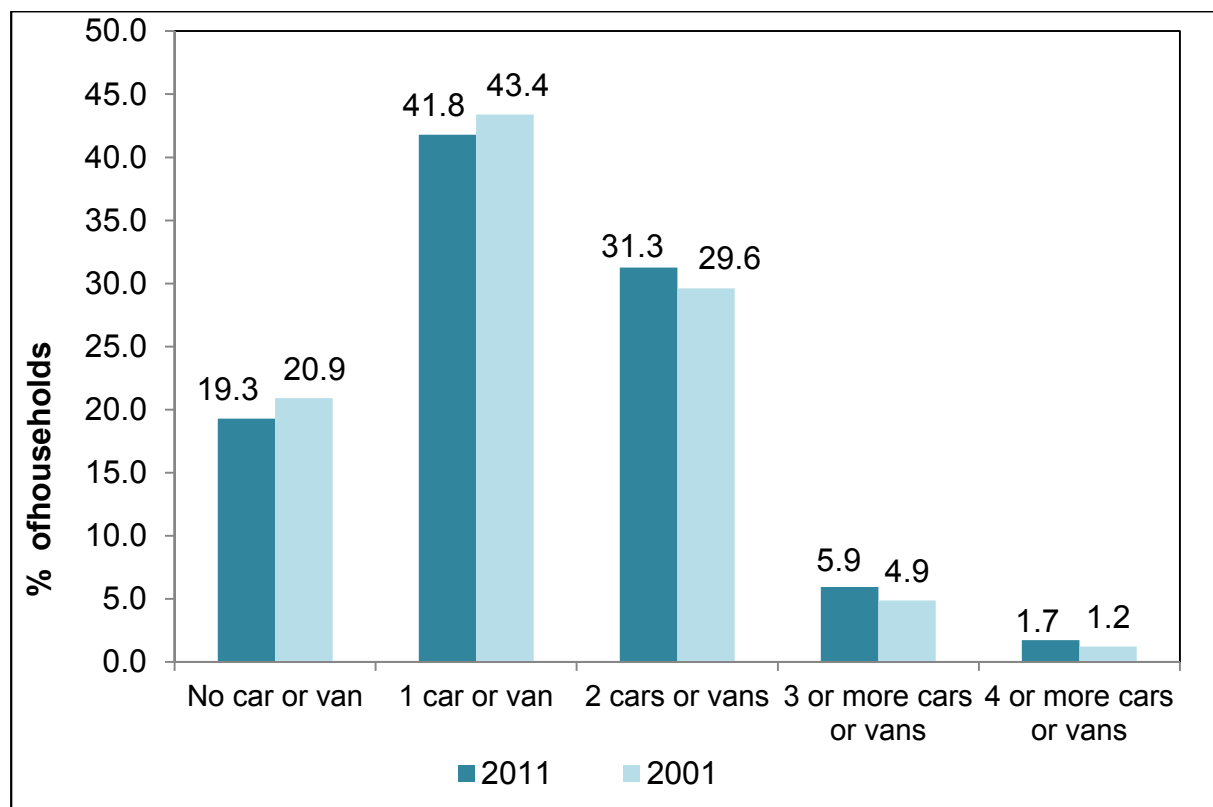
The number of occupied Warrington households with no car or van decreased between 2001 and 2011 by 672, representing a reduction of 2.5%.

In 2011 there were 1,551 more Warrington households with 1 car or van compared with 2001, representing an increase of 2.7%.

Over the same period the number of households with 2 cars or vans increased by 4,488 (11.5%) and the number of households with 3 or more cars or vans increased by 2,182 (29.5%).

The number of households with 4 or more cars or vans increased by 1,006 between 2001 and 2011. This is equivalent to an increase of 47.8%.

4.6 Percentage of Households by Car or Van Availability for 2001 and 2011



Source: 2011 Census table, KS404EW: Car or Van Availability. 2001 Census table, KS017: Cars or Vans. Office for National Statistics licensed under the Open Government License v1.0.

Section 5: Qualifications

This section explores changes in the highest level of qualifications gained by Warrington residents between 2001 and 2011.

5.1 Highest Qualification Attained	2011		2001		2001 – 2011 change	
	Aged 16 and over	% Aged 16 and over	Aged 16 to 74	% Aged 16 to 74	Number	%
All usual residents	163,477	100.0	139,054	100.0	24,423	17.6
No qualifications	33,815	20.7	37,370	26.9	-3,555	-9.5
Level 1	23,846	14.6	24,642	17.7	-796	-3.2
Level 2	27,000	16.5	29,679	21.3	-2,679	-9.0
Apprenticeship	6,699	4.1	Not a-	Not a-	Not a-	Not a-
Level 3	20,593	12.6	10,160	7.3	10,433	102.7
Level 4+	44,870	27.4	27,440	19.7	17,430	63.5
Other qualifications	6,654	4.1	9,763	7.0	-3,109	-31.8

Source: 2011 Census table, KS501EW: Qualifications and Students. 2001 Census table, KS013: Qualifications and Students. Office for National Statistics licensed under the Open Government License v1.0.

Notes: This question is broadly comparable between 2001 and 2011. In 2011 categories relate to people aged 16 years and over, whereas 2001 categories related only to people aged 16 to 74 years.

In 2011 a new category of 'Apprenticeship' was added which may affect comparability, as apprenticeships are available at a range of Levels.

In 2011 the highest qualification level was renamed 'Level 4+' from 'Level 4/5' in 2001.

Definitions:

Level 1: 1+ O Level passes; 1+ CSE/GCSE any grades; NVQ Level 1; Foundation GNVQ.

Level 2: 5+ O Level passes; 5+ CSEs (at grade 1); 5+ GCSEs (grades A-C); School Certificate; 1+ A Levels/AS Levels; NVQ Level 2; Intermediate GNVQ.

Level 3: 2+ A Levels; 4+ AS Levels; Higher School Certificate; NVQ Level 3; Advanced GNVQ.

Level 4+: First degree; Higher degree; NVQ Levels 4 and 5; HNC; HND; Qualified Teacher Status; Qualified Medical Doctor; Qualified Dentist; Qualified Nurse; Midwife; Health Visitor.

The number of Warrington residents with no qualifications decreased by 3,555 between 2001 and 2011, representing a reduction of 9.5%.

The number of residents with a highest level qualification at Level 1 decreased by 796 over the ten years to 2011, representing a reduction of 3.2%.

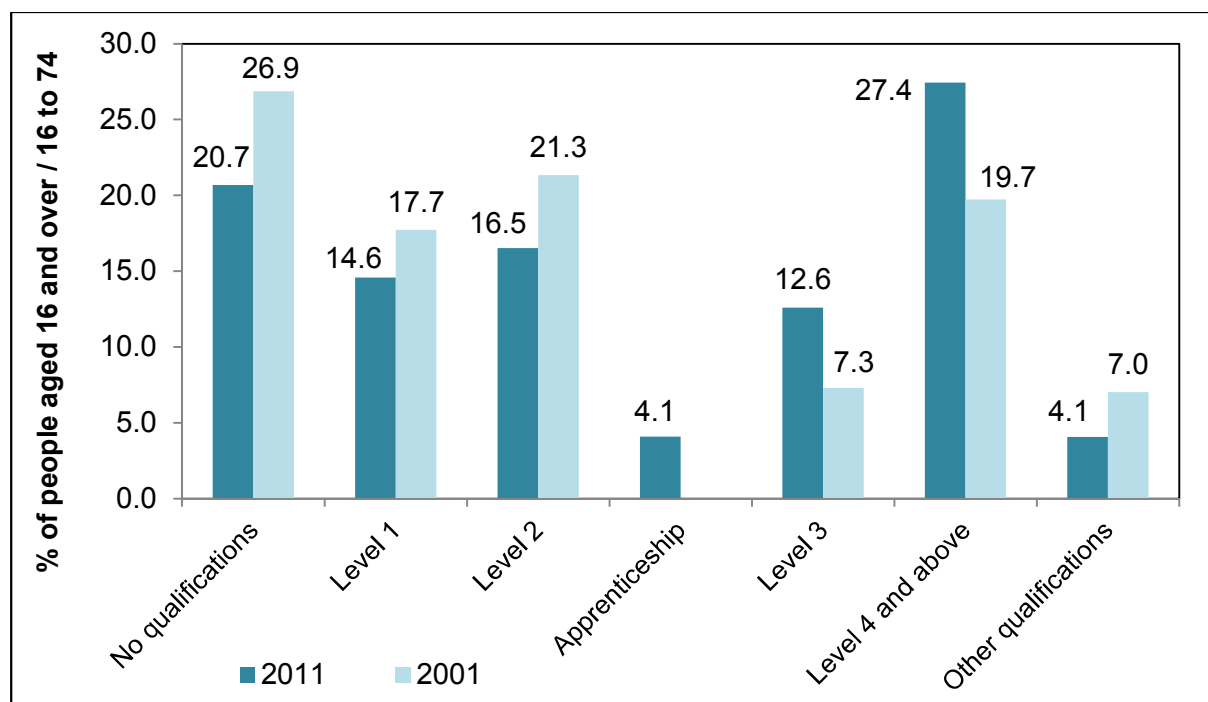
The number of residents with a highest level qualification at Level 2 decreased by 2,679, equivalent to a reduction of 9.0%.

In contrast, between 2001 and 2011 the number of residents with a highest level qualification at Level 3 doubled, increasing by 10,433 (102.7%).

The number of residents with a highest level qualification at Level 4 increased by 17,430 or 63.5%.

The number of Warrington residents whose highest level qualification is classed as an 'Other' qualification decreased by 3,109 (31.8%) compared with 2001.

Chart 5.2 Percentage of Residents by Highest Qualifications Attained for 2001 (16 to 74 years) and 2011 (16 years and over)



Source: 2011 Census table, KS501EW: Qualifications and Students. 2001 Census table, KS013: Qualifications and Students. Office for National Statistics licensed under the Open Government License v1.0.

Section 6: Labour Market

This section explores changes in the labour market and economic activity between 2001 and 2011.

6.1 Economic Activity	2011		2001		2001 to 2011 Change	
	Usual residents aged 16 to 74	% Usual residents aged 16 to 74	Usual residents aged 16 to 74	% Usual residents aged 16 to 74	Number	%
All usual residents aged 16 to 74	149,461	100.0	139,054	100.0	10,407	7.5
Economically active:	107,765	72.1	95,752	68.9	12,013	12.5
Employee; part-time	21,782	14.6	18,165	13.1	3,617	19.9
Employee; full-time	63,875	42.7	61,123	44.0	2,752	4.5
Self-employed	11,617	7.8	9,136	6.6	2,481	27.2
Unemployed	5,961	4.0	4,064	2.9	1,897	46.7
Full-time student	4,530	3.0	3,264	2.3	1,266	38.8
Economically inactive:	41,696	27.9	43,302	31.1	-1,606	-3.7
Retired	22,189	14.8	18,786	13.5	3,403	18.1
Student	5,441	3.6	4,205	3.0	1,236	29.4
Looking after home/family	4,917	3.3	7,633	5.5	-2,716	-35.6
Permanently sick/disabled	6,063	4.1	8,623	6.2	-2,560	-29.7
Other	3,086	2.1	4,055	2.9	-969	-23.9

Source: 2011 Census table, KS601EW: Economic Activity. 2001 Census table, KS09A: Economic Activity - Persons. Office for National Statistics licensed under the Open Government License v1.0.

Note: This question is fully comparable between 2001 and 2011.

In 2011 Warrington residents were more likely to be economically active than in 2001. 72.1% were economically active compared with 68.9% in 2001.

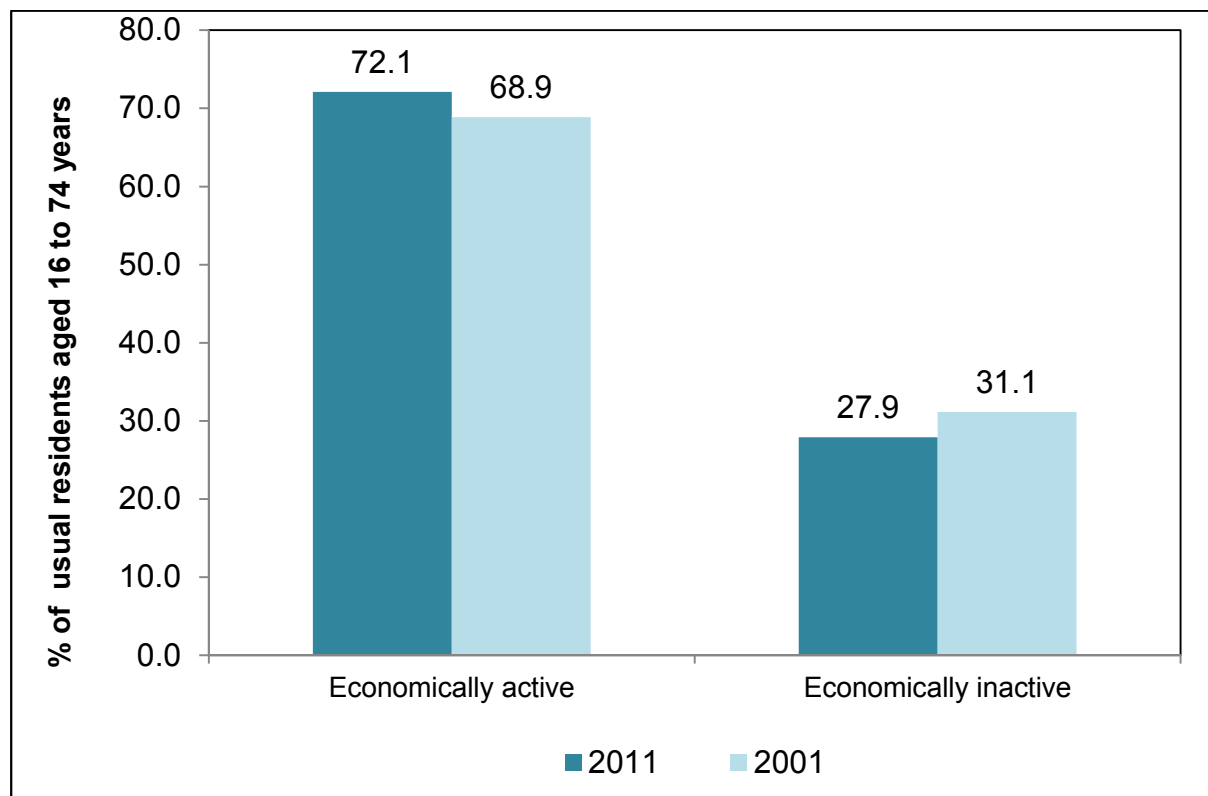
The number of people aged 16 to 74 years who were economically active increased by 12,013 between 2001 and 2011, representing a rise of 12.5%.

The number of unemployed people aged 16 to 74 years increased by 1,897 between 2001 and 2011, representing an increase of 46.7%. This represents the largest proportional change across all economically active categories.

The number of people aged 16 to 74 years who were economically inactive decreased between 2001 and 2011 by 1,606, representing a reduction of 3.7%.

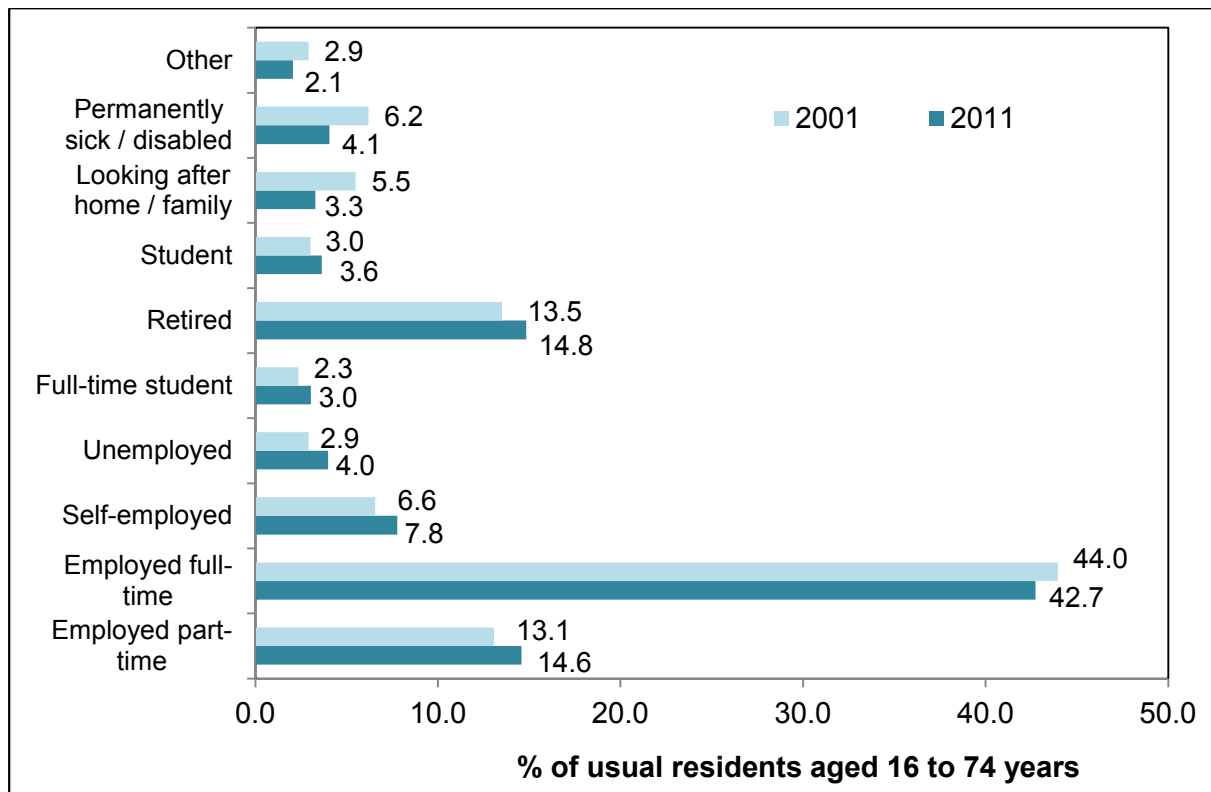
The number of people aged 16 to 74 years who were looking after the home or family decreased by 2,716 between 2001 and 2011, which equates to a reduction of 35.6%.

Chart 6.1a Percentage of Usual Residents aged 16 to 74 who are Economically Active / Inactive in 2001 and 2011



Source: 2011 Census table, KS601EW: Economic Activity. 2001 Census table, KS09A: Economic Activity - Persons. Office for National Statistics licensed under the Open Government License v1.0.

Chart 6.1b Percentage of Usual Residents aged 16 to 74 who are Economically Active / Inactive in 2001 and 2011 by category



Source: 2011 Census table, KS601EW: Economic Activity. 2001 Census table, KS09A: Economic Activity - Persons. Office for National Statistics licensed under the Open Government License v1.0.

In total 3.9% of Warrington's usual residents aged 16 to 74 were unemployed in 2011, compared with 2.4% in 2001. The number increased by 2,430, which equates to growth of 72.0%.

Amongst 16 to 24 year-old residents the number who were unemployed increased from 1,133 in 2001 to 1,759 in 2011. This is an increase of 55.3%.

Unemployment amongst residents aged 50 to 74 increased by 39.1% over the same period, to 1,121 in 2011. In 2011 0.8% of usual residents aged 50 to 74 were unemployed).

The number of residents aged 16 to 74 years who have never worked more than doubled between 2001 and 2011. In 2011 there were 663 residents aged 16 to 74 who have never worked, reflecting an increase of 127.1% since 2001.

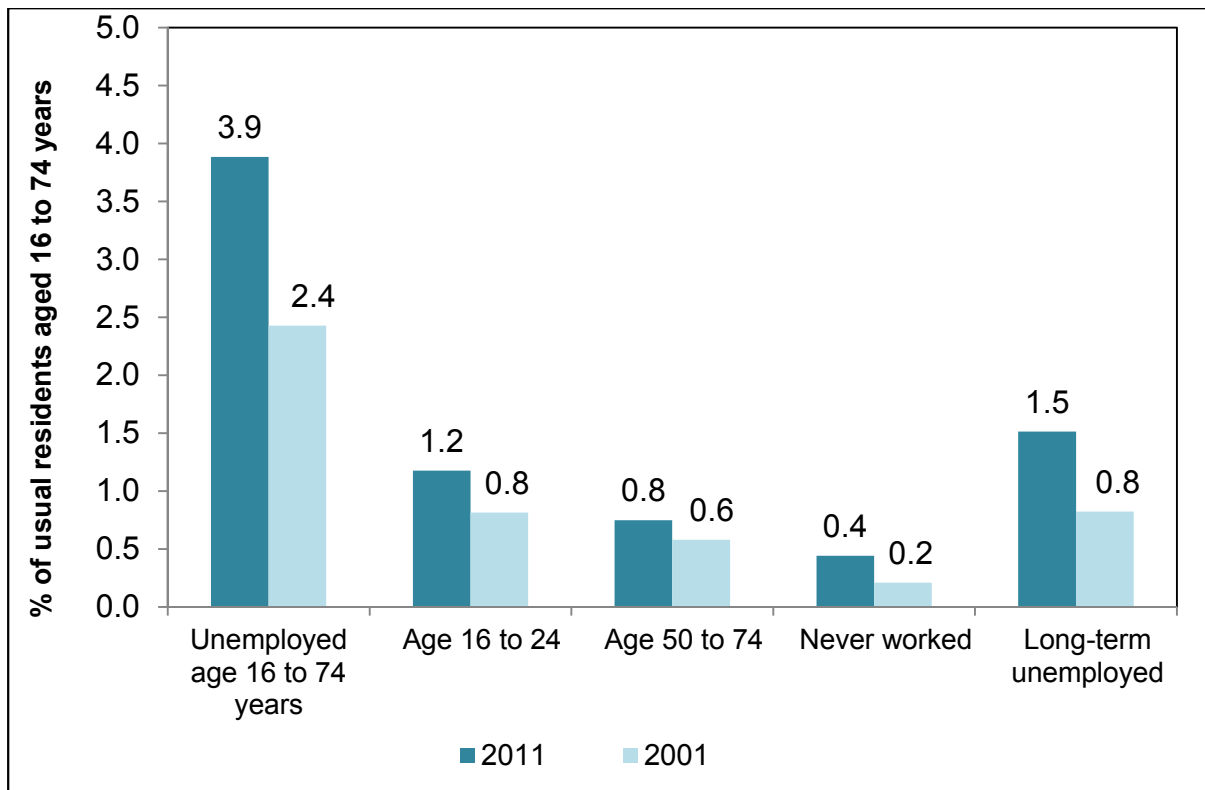
Between the two censuses long-term unemployment increased by 97.6% amongst usual residents aged 16 to 74 years. 1.5% of residents were long-term unemployed in 2011 (2,263 individuals), compared with 0.8% in 2001.

6.2 Unemployed residents	2011		2001		2001 to 2011 Change	
	Number	%	Number	%	Number	%
All usual residents aged 16 to 74	149,461	100.0	139,054	100.0	10,407	7.5
Unemployed 16 to 74 years:	5,806	3.9	3,376	2.4	2,430	72.0
Age 16 to 24	1,759	1.2	1,133	0.8	626	55.3
Age 50 to 74	1,121	0.8	806	0.6	315	39.1
Never worked	663	0.4	292	0.2	371	127.1
Long-term unemployed	2,263	1.5	1,145	0.8	1,118	97.6

Source: 2011 Census table, KS601EW: Economic Activity. 2001 Census table, KS09A: Economic Activity - Persons. Office for National Statistics licensed under the Open Government License v1.0.

Note: This question is fully comparable between 2001 and 2011. The 2011 age category '50 to 74 years' is directly comparable to the 2001 category of '50 years and over', since only residents aged 16-74 were included in the table for 2001. In 2011 the category 'Long-term unemployed' is defined as people who were last employed in 2009.

Chart 6.2 Percentage of Usual Residents aged 16 to 74 by Age and Unemployment Status



Source: 2011 Census table, KS601EW: Economic Activity. 2001 Census table, KS09A: Economic Activity - Persons. Office for National Statistics licensed under the Open Government License v1.0.

6.3 Occupational groups	2011		2001		2001 to 2011 Change	
	Employed people aged 16 to 74	% Employed people aged 16 to 74	Employed people aged 16 to 74	% Employed people aged 16 to 74	Number-z	%
All employed people aged 16 to 74	100,856	100.0	91,286	100.0	9,570	10.5
Managers, directors and senior officials	11,178	11.1	14,750	16.2	-3,572	-24.2
Professional occupations	18,256	18.1	10,339	11.3	7,917	76.6
Associate professional and technical occupations	13,081	13.0	12,420	13.6	661	5.3

Administrative and secretarial occupations	11,716	11.6	11,778	12.9	-62	-0.5
Skilled trades occupations	9,610	9.5	8,833	9.7	777	8.8
Caring, leisure and other service occupations	8,628	8.6	5,786	6.3	2,842	49.1
Sales and customer service occupations	9,885	9.8	8,723	9.6	1,162	13.3
Process, plant and machine operatives	6,872	6.8	7,490	8.2	-618	-8.3
Elementary occupations	11,630	11.5	11,167	12.2	463	4.1

Source: 2011 Census table, KS608EW: Occupations. 2001 Census table, KS12A: Occupation Groups – All People. Office for National Statistics licensed under the Open Government License v1.0.

Note: This question is broadly comparable between 2001 and 2011. Categories were updated for 2011 to reflect those of the Standard Occupational Classification 2010. A stricter definition of 'Manager' has been applied to the 'Managers, directors and senior officials' category and some additional categories have been created. The 2001 category of 'Personal services occupations' was expanded and renamed as 'Caring, leisure and other services occupations'.

Between 2001 and 2011 there was a 10.5% increase in the number of employed people in Warrington aged 16 to 74. In 2011 there were 9,570 more usual residents of this age group who were employed.

The number of usual Warrington residents employed in 'Professional occupations' increased by 76.6% in the ten years to 2011. This category accounts for 18.1% of employed usual residents aged 16 to 74, compared with 11.3% in 2001. This is the largest proportional change across all occupational groups.

There was an increase of 49.1% in the number of usual residents employed in 'Caring, leisure and other service occupations' between 2001 and 2011. Employee numbers in this category increased by 2,842 individuals.

In contrast, the number of residents aged 16 to 74 years employed as 'Managers, directors and senior officials' decreased by 3,572 residents (24.2%) between 2001 and 2011. This represents the largest proportional reduction across all occupational groups.

Chart 6.3 Percentage of Usual Residents aged 16 to 74 years in Employment by Occupational Group for 2001 and 2011



Source: 2011 Census table, KS608EW: Occupations. 2001 Census table, KS12A: Occupation Groups – All People. Office for National Statistics licensed under the Open Government License v1.0.

6.4 National Statistics Socio-economic Classification (NS-SeC)	2011		2001		2001 to 2011 Change	
	Employed people aged 16 to 74	% Employed people aged 16 to 74	Employed people aged 16 to 74	% Employed people aged 16 to 74	Number	%
All categories: NS-SeC	149,461	100.0	139,054	100.0	10,407	7.5
Higher managerial, administrative & professional occupations:						
Large employers & higher managerial & admin.	4,123	2.8	5,999	4.3	-1,876	-31.3

occupations							
Higher professional occupations	13,459	9.0	7,282	5.2	6,177	84.8	
Lower managerial, administrative & professional occupations	33,022	22.1	27,568	19.8	5,454	19.8	
Intermediate occupations	21,686	14.5	14,527	10.4	7,159	49.3	
Small employers & own account workers	11,159	7.5	7,648	5.5	3,511	45.9	
Lower supervisory & technical occupations	10,989	7.4	10,771	7.7	218	2.0	
Semi-routine occupations	21,259	14.2	16,413	11.8	4,846	29.5	
Routine occupations	17,846	11.9	13,385	9.6	4,461	33.3	
Never worked / Long-term unemployed:	6,115	4.1	3,727	2.7	2,388	64.1	
Never worked	3,852	2.6	2,582	1.9	1,270	49.2	
Long-term unemployed	2,263	1.5	1,145	0.8	1,118	97.6	
Not classified / Full-time students:	19,606	13.1	31,734	22.8	-12,128	-38.2	
Full-time students	9,803	6.6	7,277	5.2	2,526	34.7	
Not classifiable for other reasons	0	0.0	24,457	17.6	-24,457	-100.0	

Source: 2011 Census table, KS611EW: NS-SeC by Sex. 2001 Census table, KS14A: National Statistics Socio-economic Classification – All People. Office for National Statistics licensed under the Open Government License v1.0.

Note: This question is fully comparable between 2001 and 2011.

In 2011 the largest socio-economic group in Warrington consisted of usual residents employed in 'Lower managerial, administrative & professional occupations'. This group accounted for 22.1% of all employed residents, compared with 19.8% in 2001.

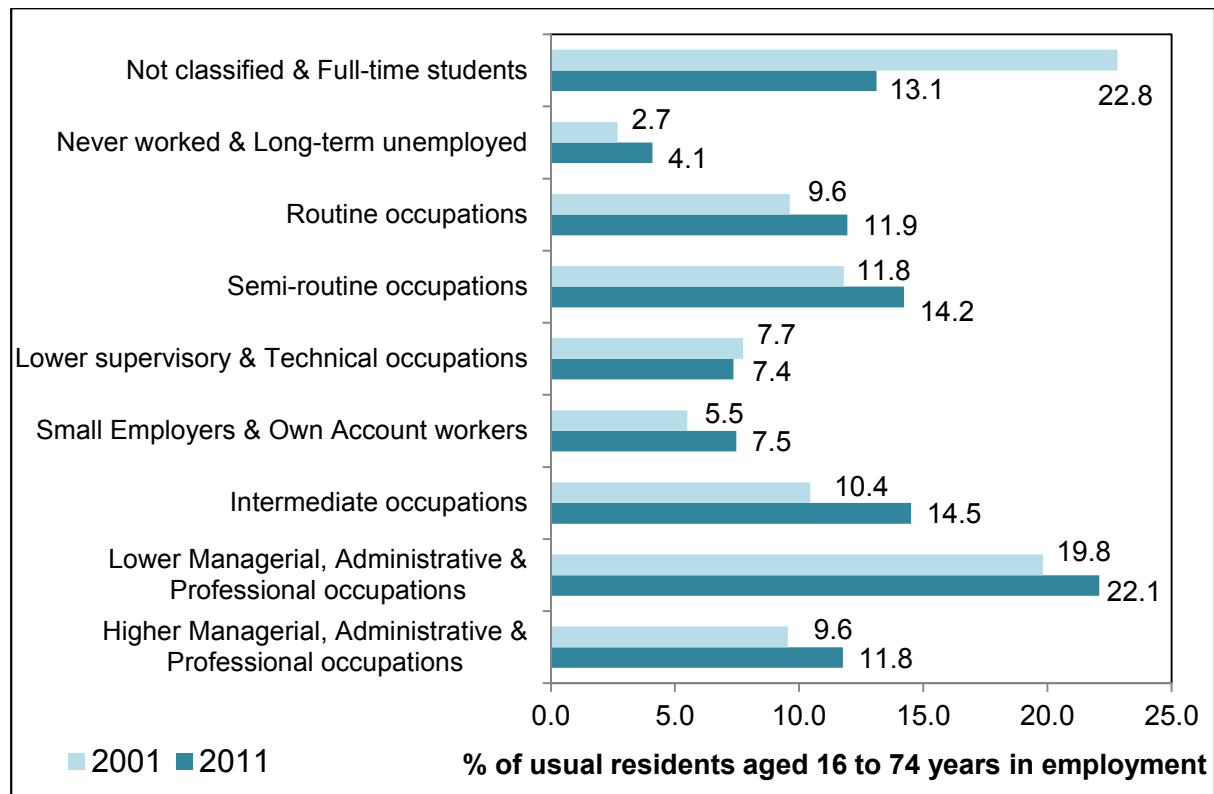
In proportional terms, the largest change in socio-economic classification in Warrington between the 2001 and 2011 censuses took place amongst residents classed as 'long-term unemployed.' This category increased by 97.6% (1,118 individuals) to account for 1.5% of employed residents aged 16 to 74.

In numeric terms, the largest increase took place amongst residents employed in intermediate occupations (i.e. clerical, sales, service and intermediate technical occupations). The number employed in this group increased by 7,159 residents (49.3%).

The number of usual residents aged 16 to 74 years within the socio-economic category of 'large employers and higher managerial and administrative occupations' decreased between 2001 and 2011 by 1,876, representing a decrease of 31.3%.

In 2001 Warrington had 24,457 residents in the category of 'Not classifiable for other reasons', which reduced to nil in 2011. This category therefore saw the largest proportional reduction across all groups.

Chart 6.4 Percentage of Usual Residents aged 16 to 74 years in Employment by National Socio-economic Classification for 2001 and 2011



Source: 2011 Census table, KS611EW: NS-SeC by Sex. 2001 Census table, KS14A: National Statistics Socio-economic Classification – All People. Office for National Statistics licensed under the Open Government License v1.0.

Section 7. Travel to work

This section explores changes in residents' method of travel to work between 2001 and 2011.

7.1 Method of travel to work	2011		2001		2001 to 2011 Change	
	All Usual Residents Aged 16 to 74	% All Usual Residents Aged 16 to 74	All people	% All people	Number	%
All Usual Residents Aged 16 to 74	149,461	100.0	139,054	100.0	10,407	7.5
Work Mainly at or From Home	9,336	6.2	7,541	5.4	1,795	23.8
Underground, Metro, Light Rail, Tram	142	0.1	157	0.1	-15	-9.6
Train	2,068	1.4	1,128	0.8	940	83.3
Bus, Minibus or Coach	4,946	3.3	4,775	3.4	171	3.6
Taxi	368	0.2	414	0.3	-46	-11.1
Motorcycle, Scooter or Moped	677	0.5	1,028	0.7	-351	-34.1
Driving a Car or Van	67,670	45.3	60,413	43.4	7,257	12.0
Passenger in a Car or Van	5,650	3.8	5,972	4.3	-322	-5.4
Bicycle	2,577	1.7	2,936	2.1	-359	-12.2
On Foot	7,038	4.7	6,599	4.7	439	6.7
Other Method	384	0.3	323	0.2	61	18.9
Not in Employment	48,605	32.5	47,768	34.4	837	1.8

Source: 2011 Census table, CT0015: Method of Travel to Work – Alternative. 2001 Census table, UV39: Method of Travel to Work – Resident Population. Office for National Statistics licensed under the Open Government License v1.0.

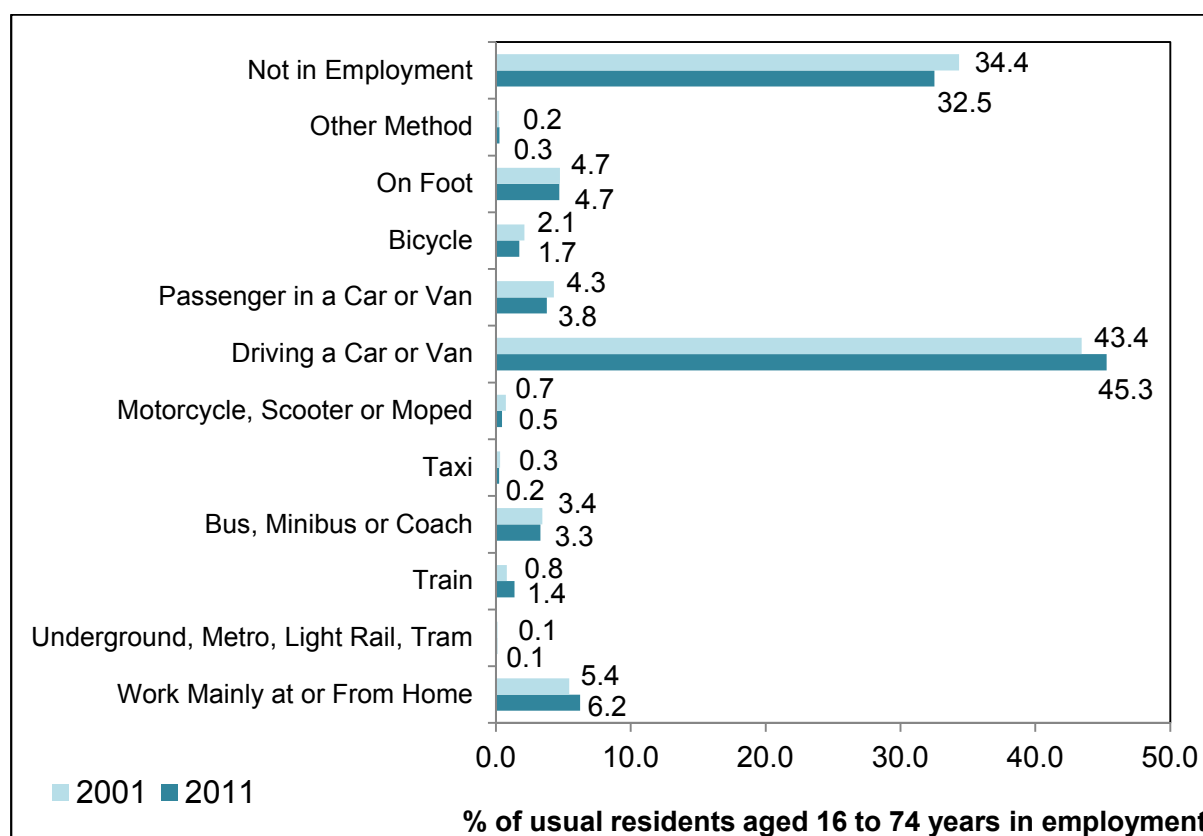
Note: This question is fully comparable between 2001 and 2011. In the 2011 Census people working mainly at or from home were categorised by their method of travel to customer meetings rather than by their status of working from home as was done in 2001. The table above is based upon a comparison with a customised table (CT0015) which allows a broad comparison to 2001 Census figures. A different table (KS701EW) based upon 2011 Census working mainly at or from home data is used in the complimentary 2011 Census Ward Atlas report. Therefore the figures in this table will differ from the ones used in that report. In 2011 the category 'taxi' differs to that in 2001, which was referred to as 'taxi or minicab'.

In 2011 the largest proportion of employed residents aged 16 to 74 years travelled to work by car or van (45.3%, compared with 43.4% in 2001). This represents 7,257 more commuters on Warrington's roads in comparison to 2001.

In proportional terms, the highest increase between 2001 and 2011 was in the number of residents who travel to work by train. In 2011 there were 940 more residents who used this form of transport, equivalent to an increase of 83.3%.

In numeric terms, the largest decrease was in people who cycle to work. There were 359 fewer people who used this form of transport in 2011 compared with 2001, a reduction of 12.2%.

Chart 7.2 Percentage of Usual Residents aged 16 to 74 by Method of Travel to Work for 2001 and 2011



Source: 2011 Census table, CT0015: Method of Travel to Work – Alternative. 2001 Census table, UV39: Method of Travel to Work – Resident Population. Office for National Statistics licensed under the Open Government License v1.0.