

Warrington

Community Safety Partnership Plan 2021 to 2024

“Committed to keeping Warrington a Safe Place to live, work and visit”

Contents

About Warrington CSP	4
Looking back over 2020	5
Key Activities Delivered during 2018 – 2021 plan	7
Key performance indicators	8
Ward Crime and ASB rates	9
Looking forward - Our 2021 - 2024 priorities.....	10
Looking forward - what we will do and how we will measure progress.....	11

Our partnership priority is to work towards preventing crime occurring in the first place and equally to assist and protect those who sadly fall victim and to those communities that experience anti-social activities and behaviour which can negatively impact on the neighbourhood environment.

The impacts of crime and disorder can be long lasting. It has costs for individuals, families, businesses, for the economy and our communities. No one agency can ensure that Warrington is a safe place to live, visit, work and be able to safeguard those at risk of exploitation. In Warrington, we continually work to review and improve our multi-agency arrangements and partnership working so that we maximise and use all available resources for the benefit of the town. We are committed to continual reflection and change. We relied on our strong partnerships during the COVID 19 pandemic adapting to change to protect our communities.

This partnership plan provides a road map for community safety over the next 3 years, working in line with the priorities of Cheshire's Police and Crime Commissioner.

Paula Worthington

Chair of Warrington Community Safety Partnership

About Warrington CSP

‘Well Warrington’ - the Health and Wellbeing Strategy for Warrington 2019 – 2023 sets out Warrington’s partnership vision of *“Warrington is a place where we work together to create a borough with stronger neighbourhoods, healthier people and greater equality across all our communities”*.

The Community Safety Partnership are committed to keeping ***Warrington as a safe place to live, work and visit, ensuring that the most vulnerable are safe and feel safer.***

We align our priorities with that of the Police & Crime Commissioner for Cheshire.

What is the Community Safety Partnership?

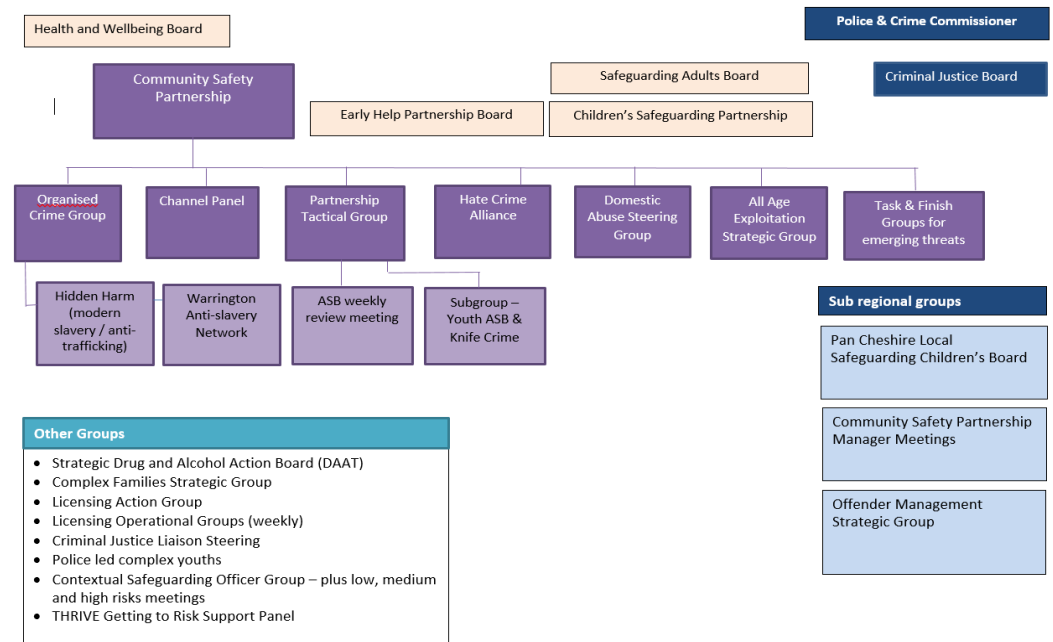
The CSP is the local multi-agency partnership that has been established to tackle community safety issues within Warrington. It has a statutory obligation under the Crime and Disorder Act 1998 (and subsequent legislation) to work in partnership to address issues of:

- Crime and disorder
- Anti-social behaviour
- Behaviour adversely affecting the environment
- Substance misuse
- Reducing re-offending

The partnership meets 4 times a year and is supported by a range of groups as shown opposite. Along with other supporting partner agencies, some of the key organisations that make up the CSP include:

- Warrington Borough Council
- Cheshire Constabulary
- Cheshire Fire and Rescue Service

- Warrington Clinical Commissioning Group
- Warrington Public Health
- Youth Justices Service
- National Probation Service
- Cheshire and Greater Manchester CRC



The CSP has a statutory duty to outline the Partnership priorities and delivery plans, which are determined by a statutory annual Community Safety Strategic Assessment; this is completed locally.

The overall purpose is to ‘add value’ to the work already being carried out by the separate partner organisations.

Looking back over 2020

Warrington Community Safety Partnership saw an 11% reduction in overall recorded crime volumes in 2020 (2,250 fewer offences). This reduction has been most notable during the months the country has been in national lockdown due to the COVID-19 pandemic. Of note, crime volumes for those months outside of the national lockdown were in line with those seen over the past 3 years.

The highest crime rates per 1,000 population are still within the inner areas of Warrington (Bewsey and Whitecross; Fairfield and Howley; Latchford East and Latchford West) and the north of Warrington (Poplars and Hulme; Orford and Poulton North). This is a similar picture with regard to anti-social behaviour (ASB).

Volumes of police recorded ASB incidents across Warrington in 2020 rose by 31% (+1,246 incidents) when compared with 2019. This trend was seen across Cheshire, with the largest percentage increases being for Environmental and Nuisance ASB. The Council also observed increases in flytipping, noise complaints and ASB reports.

Hate crime saw a slight decrease of -2%, despite Cheshire Constabulary as a whole seeing a significant reduction in the volume of recorded Hate crimes (-9.9%). Monthly volumes have generally remained close to average over the past 2 years.

Acquisitive crimes such as shoplifting, robbery, vehicle offences and theft saw decreases over 2020. Warrington remains lower than average when compared to national rates across these types of offences.

Cyber-crimes across Warrington CSP have increased 103% (+828 offences) when compared with 2019. It is worth noting that the number of Cyber-crimes committed and reported nationally have increased during the pandemic. Within Warrington, it is an increase in Cyber-enabled offences that have accounted for the overall increase. These are crimes that may be committed without ICT devices, such as financial fraud, but are changed significantly by use of ICT in terms of scale and reach. During the COVID pandemic, partners have had to adapt, secure and safeguard communities, schools and pupils with the move to home learning/working, online services and particularly school online learning from cyber-crime/attacks.

Volumes of Domestic related offences across Warrington have remained stable (3,410 to 3,424) when compared with 2019. A new revised DA Steering Group and governance structure has been established.

Alcohol-Related crime decreased by 8% (-144 offences). It would seem that COVID restrictions during 2020 has had an impact in lowering alcohol-related violence, but with differing pictures across the Police beat clusters. The most significant decrease was seen in Warrington Town Centre.

A total of 63 Possession of weapons offences were recorded across Warrington in 2020, representing a 43% decrease (or 47 fewer offences) than were recorded last year (110 offences). The rate per 1,000 is 0.3, which is directly in line with the Cheshire Constabulary rate. When compared to Most Similar Groups (MSG), Warrington is lower than average and placed first (lowest) amongst the MSGs. Knife crime offences increased by 6 offences on the previous year and matches the pattern of possession when compared to its MSGs.

Community Safety In Warrington – Facts & Figures: (Findings from the strategic assessment for the period January to December 2020 or latest data)



17,838 Crimes Committed (that is 84.9 crimes per 1,000 residents)

3,424 Domestic Abuse crimes

317 Bike thefts



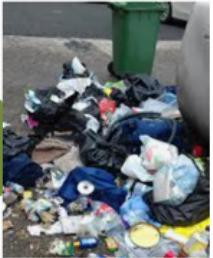
Substance misuse services (18+) – number in treatment:
 410 Alcohol users
 514 Opiate users
 190 Non-opiate



1,723 Alcohol related crimes and 356 drug offences

5,311 incidents of anti-social behaviour (that is 25.3 per 1,000 residents)

1,801 fly-tipping complaints



Note: all crimes volumes affected by COVID Pandemic and restrictions

- 2% reduction in Hate Crime
- 7% reduction in deliberate fires
- Recorded pedal cycle theft reduced by -32%

UPS & DOWNS

Domestic Abuse Crime
 Volumes slight increase of 0.41% (3,410 to 3,424)

31% increase in police reported ASB, partly due to COVID breach reports

Knife crime increased by 6 offences (79 to 85) **8%**



247 deliberate fires

Key Activities Delivered during 2018 – 2021 plan

Preventing and responding to crime and people feel safe	Anti-social behaviour & public order	Domestic Abuse, Stalking and Sexual Offences	Protecting our communities from harm
Policing and agency response/change in delivery during the COVID-19 Pandemic			
High profile arrests and sentences for organised crime nominals and continued disruption of county lines	Continued work under Contextual Safeguarding to ensure ASB processes are linked with Early Help and CS agenda	A new revised DA Steering Group and governance structure has been established	Online safety for schools and online safeguarding for students as learning turned virtual during the COVID Pandemic
PCC/CSP funded two mobile CCTV units for the Borough Additional CCTV units secured under Safer Streets for Bewsey & Whitecross	Weekly ASB meetings to provide early intervention and a responsive Youth Outreach programme to tackle hotspots across the Borough and encouraging young people to adhere to COVID 19 restrictions	Department for Communities & Local Government funding for 2 years (project now ended) to address the lack of capacity for victims with complex needs to be supported in refuge accommodation across Cheshire.	Secured PCC community safety partnership funding for Ethnic Minorities Youth Group
Adapted and enabled children and young people to work online safely			Establishment of PTAC Youth ASB & Knife Crime Group
High profile successful prosecutions by Trading Standards/Public Protection	Successful Operation Treacle which continues to show year on year reductions in incidents	Funding for collaborative Cheshire Perpetrator Programme which is now in place	Disruption of county lines and on street multi-agency working in the form of Operation Stay Safe
Continue to locally promote national scams team prevention activity and free advice/services and high profile prosecutions	Successful prosecutions for flytipping, including a person who advertised waste disposal services without a license and then dumped waste in Warrington		
Embedding Police Problem Solving Team and Police Hidden Harm Team who have been integral to tackling modern slavery	PTAC ASB initiatives 50K: <ul style="list-style-type: none"> County Lines – delivery of high school plays, Vitoria Park Project, Orford Park Outreach, Town Centre Outreach, Livewire Padgate Holiday, Livewire Project Street Sports, Saturday ASB Elevate Youth Outreach, Bike marking kits 	Established a new survivors and supporters forum	Developed a strong partnership approach to combatting modern slavery with a clear protocol in place to support suspected victims and victims and multi-agency training.
Successful application and implementation of project for Bewsey & Whitecross Safer Streets Fund £550k to tackle acquisitive crime		Establishing a service offer for child parent violence and abuse	No2h8 National Award to Warrington Hate Crime Action Alliance for Local Authority Upstander Award for its partnership approach to stopping hate crime in Warrington.

Key performance indicators

Crime/Incident	2017	2018	2019	2020	2020 rate ¹	2021 – 2024 aims	Cheshire Rate ²	England rate ³	Most Similar Group Comparison – YE Sept 2020
All Crime	17,652	19,369	20,088	17,838	84.9	Maintain/Reduce	81.4	80.3	Higher than average
Drug Offences	449	426	392	356	1.7	Maintain	1.9	3.4	Lower than average
Violence against the person	4,944	6,328	7,663	7,801	37.1	Reduce	36.3	29.8	Violence and sexual offences: Higher than average
Knife crime ⁴	67	71	79	85	0.40	Reduce	0.37	0.87	
Sexual Offences	503	783	674	640	3.0	Maintain/Reduce	2.7	2.5	
Domestic Abuse crimes (Police data)	1,720	2,834	3,410	3,424	16.3	Increase reporting	-	-	-
Burglary (Residential)	680	713	735	534	2.5	Maintain	2.7	3.7	Burglary: Lower than average
Burglary (Non-residential)	388	241	292	198	0.9	Maintain	0.9	1.4	
Theft from a motor vehicle	600	553	520	427	2.0	Maintain	Vehicle offences: 2.5 6.4		Vehicle crime: Lower than average
Theft of a vehicle	227	236	297	194	0.9	Maintain			
Shoplifting	1,440	1,399	1,275	1,029	4.9	Maintain/Reduce	4.4	4.3	Same as average
Bicycle theft	462	493	468	317	1.5	Maintain/Reduce	1.1	1.3	Same as average
Hate Crimes	270	373	442	435	2.1	Maintain / Increase reporting	1.9	-	-
ASB	6,778	4,052	4,065	5,311	25.3	Reduce	25.6	-	-
ASB environmental - fly tipping	270	238	159	317	1.5	Maintain/Reduce	-	-	-
Public order	3,582	3,670	3,346	2,889	13.8	Reduce	13.4	7.8	Higher than average
Criminal Damage & Arson	2,148	2,008	2,012	1,682	8.0	Maintain/Reduce	8.0	8.3	Same as average
Deliberate fire activity	261	282	266	247	1.2	Maintain/Reduce	0.8	-	-
First time entrants - Youth Justice system	28	33	23 ⁵	Not avail	-	Maintain	-	-	-
Average IOM Cohort offenders	39	42	-	44	-	Maintain/Increase	-	-	-
Public Protection reported scams	104	123	83	60	0.3	-	-	-	-
Victims of doorstep crime (reported)	94	55	28	35	0.2	-	-	-	-

¹ Rates provided by Cheshire Constabulary.

² Rates from ONS (excludes fraud) police force data tables. Where there is no ONS Cheshire rate is from Cheshire Constabulary.

³ Rates from ONS (excludes fraud) police force data tables

⁴ Knife crime - Home Office definition of a Knife Crime. (Use of knives and other sharp instruments) this includes Violent and Sexual Offences only.

⁵ FTEs – 2018 figures represent Oct 2017- Nov 2018 and 2019 figures represent Oct 2018 - Nov 2019

Ward Crime and ASB rates

The following tables provide recorded crime and anti-social behaviour rates per 1,000 population for Warrington Police beats. Data sourced from Cheshire Constabulary. The inner wards of Warrington continue to have higher rates of crime and anti-social behaviour.

1). Crime

Police Beat	Recorded Crime (2020)	Percentage	Crime Rate (1,000 pop)
Appleton	369	2%	35
Bewsey And Whitecross (inc. Town Centre beat)	3844	21%	312
Birchwood	859	5%	80
Burtonwood And Winwick	584	3%	92
Culcheth Glazebury And Croft	613	3%	52
Fairfield And Howley	2086	12%	160
Grappenhall And Thelwall	315	2%	33
Great Sankey North	205	1%	32
Great Sankey South	541	3%	51
Hatton Stretton And Walton	131	1%	42
Latchford East	1041	6%	128
Latchford West	557	3%	82
Lymm	655	4%	53
Orford	1136	6%	107
Penketh And Cuerdley	341	2%	40
Poplars And Hulme	1383	8%	131
Poulton North	854	5%	83
Poulton South	246	1%	38
Rixton And Woolston	538	3%	59
Stockton Heath	366	2%	57
Westbrook	392	2%	61
Whittle Hall	845	5%	70
Warrington CSP	17901	100%	89

2). Anti-social behaviour

Beat	Grand Total	%	ASB incident rate per 1,000 pop.
Appleton	170	3%	16.0
Bewsey And Whitecross (inc. Town Centre)	966	18%	78.3
Birchwood	228	4%	21.3
Burtonwood And Winwick	100	2%	15.8
Culcheth Glazebury And Croft	184	3%	15.7
Fairfield And Howley	586	11%	45.0
Grappenhall And Thelwall	138	3%	14.2
Great Sankey North	76	1%	12.0
Great Sankey South	194	4%	18.3
Hatton Stretton And Walton	42	1%	13.6
Latchford East	285	5%	35.0
Latchford West	182	3%	26.9
Lymm	250	5%	20.2
Orford	295	6%	27.8
Penketh And Cuerdley	130	2%	15.2
Poplars And Hulme	360	7%	34.2
Poulton North	266	5%	25.9
Poulton South	103	2%	15.9
Rixton And Woolston	202	4%	22.2
Stockton Heath	86	2%	13.5
Westbrook	141	3%	21.9
Whittle Hall	327	6%	26.9
Grand Total	5311	100%	26.3

Looking forward - Our 2021 - 2024 priorities

Priority themes	Theme 1 Preventing and responding to crime and people feeling safe	Theme 2 Anti-social behaviour & public order	Theme 3 Domestic Abuse, Stalking & Sexual Offences	Theme 4 Protecting our Communities from harm
Priorities	<ul style="list-style-type: none"> ▪ Integrated Offender Management, addressing root causes. ▪ Early Help and diversionary approach to keep young people away from the criminal justice system. ▪ Safer streets - designing out crime and disorder. ▪ Partnership response to existing and new threats of Serious & Organised crime, County Lines and Modern Slavery. ▪ Online crime, scams and exploitation. ▪ Violence and knife crime (risk and perception). ▪ Day and night time economies, particularly town centre. ▪ Tackle bicycle thefts. 	<ul style="list-style-type: none"> ▪ Early Help, prevention and place based initiatives. ▪ Consistent, multi-agency coordinated problem solving. ▪ Effective ASB case management and response by maximizing use of tools and powers. ▪ Divert young people from persistent ASB and entering the youth justice system. ▪ Maintain links with Contextual Safeguarding in addressing individual and placed based disruption. 	<ul style="list-style-type: none"> ▪ Sustainable support services for all affected by DA – victims, children/young people and perpetrators. ▪ DA Strategic needs assessment ▪ Understanding the needs of female offenders who are also victims of DA. ▪ Develop a targeted Domestic Abuse strategy. ▪ Reduce the risk of repeated abuse through perpetrator programme, currently Cheshire wide. ▪ Relaunch of Operation Encompass ▪ Cheshire work around 1) understanding prolific DA offenders and 2) identifying hidden communities (elder abuse, affluent communities). ▪ Improve employers’ responses in responding to DA. ▪ Ensure statutory requirements set within the DA Act 2021 are met. 	<ul style="list-style-type: none"> ▪ Develop a multi-agency approach to ‘all age’ exploitation in order to protect individuals vulnerable to any form of exploitation or abuse, including loan sharks. ▪ Ensure our communities know how to report crime and seek support and safe spaces confidentially. ▪ Ensure all agency’s officers are trained in key issues and processes. ▪ Engagement and training with schools, parents and businesses with regard to exploitation. ▪ Hate Crime, with emphasis on encouraging and supporting disability hate crime reporting. ▪ Ensuring safer streets for all and research into street harassment and violence against women and girls within the town.
	<ul style="list-style-type: none"> • Continue effective partnership working, to meet emerging local threats, issues and to addressing underlying causes such as substance misuse, homelessness, mental health, vulnerabilities, deprivation. • Horizon scanning - respond to emerging threats, new legislation (e.g. Police Crime Sentencing and Courts Bill, DA Act 2021, Online Safety Bill) and implement within CSP management arrangements. Seek out additional funding and make appropriate bids to support Community Safety priorities. • To meet the needs of our communities due to challenges and vulnerabilities brought by COVID 19 Pandemic and exit from the European Union. 			
Links to Cheshire Police & Crime Commissioner’s Plan	<ul style="list-style-type: none"> • Prevent crime and reoffending • Tackle drug related harm and violence • Promote a safe and vibrant night time economy • Prevent and protect Cheshire’s communities from serious and organised crime • Address internet crime and fraud. 	<ul style="list-style-type: none"> • Prevent and tackle anti-social behaviour 	<ul style="list-style-type: none"> • Protect vulnerable individuals at risk of exploitation • Prevent crime and reoffending 	<ul style="list-style-type: none"> • Prevent and protect Cheshire’s communities from serious and organised crime • Address internet crime and fraud • Protect vulnerable individuals at risk of exploitation

Looking forward - what we will do and how we will measure progress

Priority Themes	Theme 1 Preventing and responding to crime and people feel safe	Theme 2 Anti-social behaviour & public order	Theme 3 Domestic Abuse, Stalking & Sexual Offences	Theme 4 Protecting our Communities from harm
Key things we will do	<ul style="list-style-type: none"> ▪ Increase level of referrals to substance misuse services via test on arrest. ▪ Publish a Drugs Strategy. ▪ Support delivery of the Alcohol Harm Reduction Strategy. ▪ Use multi-agency intelligence and powers to disrupt organised crime and county lines. ▪ Deliver County Lines/knife crime workshops to High Schools and Primary schools. ▪ Manage and deliver Warrington's Knife Crime Plan. ▪ Set up a working group to explore and understand violence against women and girls, with a focus on street harassment and safe spaces. ▪ Support strategies and plans, which include Modern Slavery, Contextual Safeguarding and Hate Crime. ▪ Tackle hospital based violence and demand ▪ Crime prevention and intervention – raising public awareness and training with regards to cyber-crime, fraud and scams. ▪ Maximise opportunities for community engagement. ▪ Task in-depth look at online crime. ▪ Promoting work to eradicate MS including tackling MS in supply chains and transparency statements. ▪ Task & Finish Groups to respond to emerging issues/localized issues. 	<ul style="list-style-type: none"> ▪ Monitor the use of ASB tools & powers (e.g parent letters, panels, Acceptable Behavioural Contracts, Community Protection Warnings/Notices, public space protection orders). ▪ Review Alcohol Public Space Protection Order. ▪ Maintain Council and Police Youth ASB process, ensuring a robust and consistent approach to managing youth ASB linked with early help based on early help and diversionary/complex youth intervention. ▪ Identify early opportunities for ASB mediation cases. ▪ Develop a clear Criminal Behaviour Order / Injunction procedure for young people. ▪ Work with Pan Cheshire colleagues on common ASB protocol, in response to New ASB Tools & Powers published 2021 ▪ Continue analysis of ASB to inform: <ul style="list-style-type: none"> - Hotspot Locations - Task & Finish groups • Tackle off road scrambler bikes in the Borough. • Key engagement with representative youth groups on PTAC Youth ASB & Knife Crime Group. 	<ul style="list-style-type: none"> ▪ Map current responses to understand our compliance with the DA Act 2021. ▪ Produce DA Strategic Assessment. ▪ Explore ways of engaging with victims / perpetrators who are not high risk and those unknown to services (hidden groups). ▪ Enhance staff confidence and skills in perpetrator management as part of a whole family approach via programme Engage. ▪ Improve understanding of the particular needs of older DA victims and those with care and support needs. ▪ Understand the needs of children and young people who abuse parents/siblings. ▪ Improve our understanding of teen abuse – victims and perpetrators ▪ Continue to engage with local GPs to improve primary care response. ▪ Embed the complex needs programme to provide continue support for victims with complex needs in refuge accommodation. ▪ Raise awareness of stalking and promote the use of the anti- stalking clinic. ▪ Identify Womens' centre programme funding beyond CSP funding secured until April 2022. 	<ul style="list-style-type: none"> ▪ Continue developing multi-agency intelligence, boards and structures to identify individuals who are potentially vulnerable to any form of abuse/exploitation. ▪ Develop an All Age Exploitation Strategy. ▪ Ensure multi-agency training plans in place and delivery (PREVENT & Channel training strategy, Contextual Safeguarding, Modern Slavery) to offer understanding of risk factors, identification and prevalent forms of exploitation. To include professionals, businesses and other agencies. ▪ Support delivery of plans in place for areas such as Hate Crime, PREVENT Strategy, CS Safeguarding development plan. ▪ Support those involved in crime and ASB on transition to adulthood (18 to 25 years). ▪ Support integrated approach to commissioning - e.g. alcohol, drugs. ▪ Support and implement the Cheshire hidden harm strategy. ▪ Promote slave-free supply chains and transparency statements. ▪ Promote the use of anonymous ways to report crime. E.g. Crime Stoppers and seek confidential support, particularly for young people.

How will we measure progress

Performance management – monitor volumes and benchmarking data. **Perception data** through neighbourhoods, police surveys and engagement with representative and community groups. **Outcome reporting** – evaluate projects/schemes

