



ATLANTIC  
GATEWAY

# STRATEGIC PLAN

JANUARY 2018

# FOREWORD

The Atlantic Gateway represents an opportunity to create the most inclusive growth corridor within the North of England. Covering the areas of Cheshire and Warrington, Greater Manchester and the Liverpool City Region, the Atlantic Gateway area includes the two great cities of Liverpool and Manchester.

It offers outstanding access to global markets and further opportunities for growth. It boasts world-leading sectors and businesses, a vast talent pool, unrivalled green and blue assets, outstanding universities and world-class infrastructure including the two major international gateways of the Port of Liverpool and Manchester Airport. It's one of the greatest places to live, invest, work and visit.

The Atlantic Gateway area has already established a global reputation for excellence in sectors including health and life sciences, advanced manufacturing, automotive, aerospace, food and drink, logistics, media, engineering and knowledge and innovation based sectors. The area has the potential to be even more successful, creating significant growth across all parts of the Atlantic Gateway area, including places outside of the major cities.

With a partnership-led Board, the Atlantic Gateway was established in 2011 in direct response to calls from leaders from the public and private sectors to develop a long-term vision for the corridor between Liverpool and Manchester. It provides a platform for partners to work together on the area's most significant priorities.

Atlantic Gateway has strong and dynamic relationships with the area's three Local Enterprise Partnerships (LEPs) and is unique in this sense. We have been the first to develop a cross-LEP Board with a focus on a small number of common priorities.

With a focus on Infrastructure and the two high growth sectors of Science and Innovation and Logistics, the Atlantic Gateway Partnership has achieved consensus on several priorities and specific projects which will create jobs throughout the area and drive growth.

Atlantic Gateway provides a unified voice on critical issues and opportunities, and has working and meaningful relationships with key organisations including Transport for the North, the Northern Powerhouse and other business groups. Collaboration will continue to be of critical importance to the long-term success of the Atlantic Gateway area and the election of City Region Mayors is an important step forward in terms of both devolution and collaboration.

The growth potential of the area can be accelerated by investment in infrastructure, especially transport. Transport investment across the North will ensure that the Atlantic Gateway area continues to compete with other global competitors and strengthen its overseas trade and investment relationships. This is particularly important in light of the UK's decision to leave the UK, whatever the outcome of negotiations.

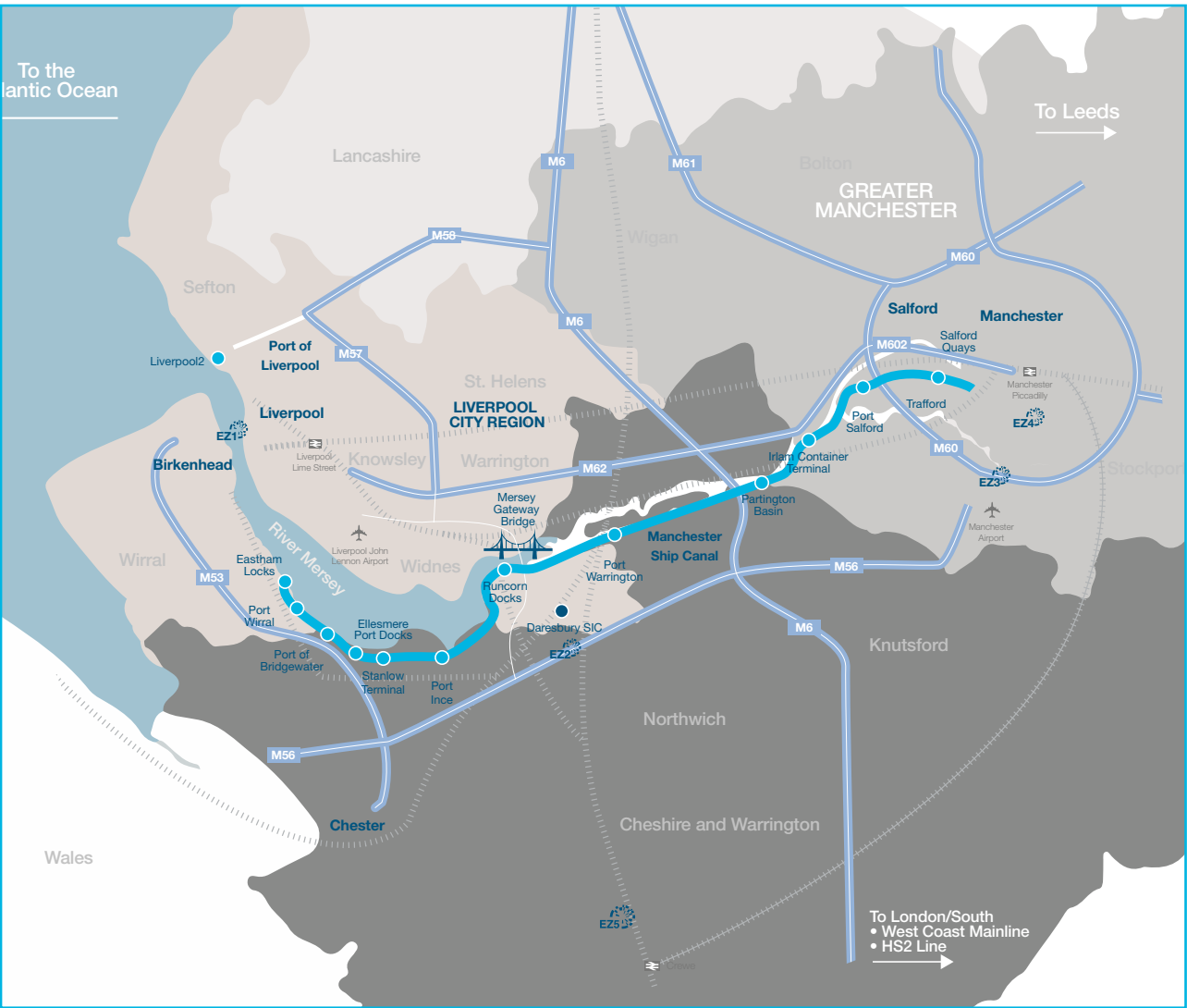
Investments in Atlantic Gateway's key priorities, alongside transport investment, will provide people with improved access to existing and new job opportunities ensuring that the many and not the few can benefit from the success of the Atlantic Gateway.

This Strategic Plan sets out some of the strengths, opportunities successes, and challenges facing the Atlantic Gateway area. It also outlines a series of specific projects that require investment now to help to rebalance the economy, improve productivity and competitiveness and create jobs for people throughout the Atlantic Gateway area. By working together with Government and the area's LEPs, we can ensure that the Atlantic Gateway area delivers growth that can work better for all people.



*Kate Willard*

Kate Willard  
Chair, Atlantic Gateway



- EZ1 Mersey Waters
- EZ2 Cheshire Science Corridor
- EZ3 Manchester Airport City
- EZ4 Corridor Manchester
- EZ5 Sci-Tech Daresbury

**THE ATLANTIC GATEWAY IS A PARTNERSHIP WITH A VISION TO DRIVE GROWTH IN THE M62 AND M56 CORRIDORS AND BOOST THE ECONOMIC SUCCESS OF THE NORTH**

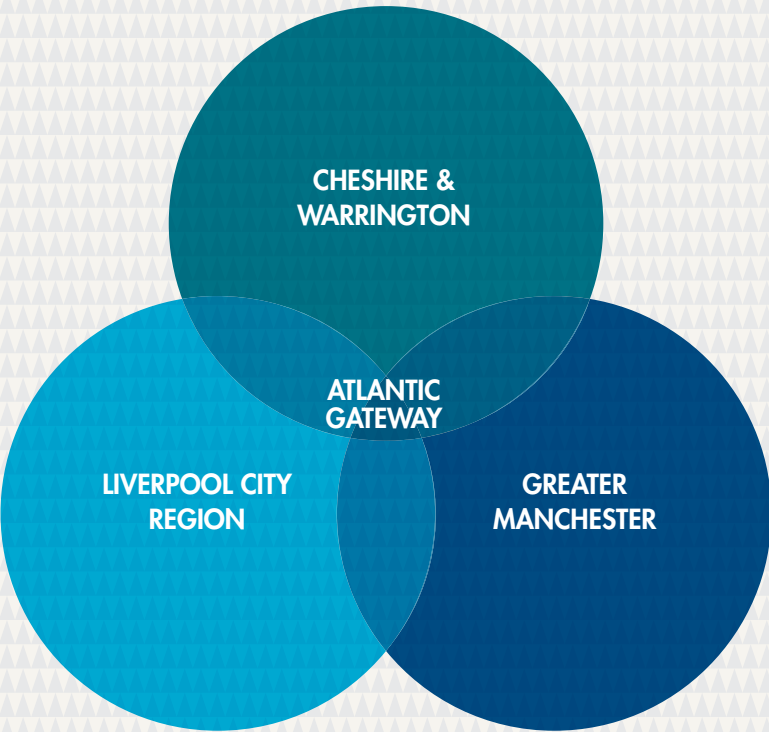
Atlantic Gateway can be defined as a series of projects across the North West area that have regional, national and international significance. It adds value to the area’s three Local Enterprise Partnerships, LEPs focusing on opportunities to improve prosperity and inclusion.

Our Board members include leaders from the public and private sectors and includes representation from Central Government. It provides a platform for discussion and action on the area’s most significant and highest priority projects where working together can accelerate growth. The Board have set the following three priorities:

- The logistics sector
- The science and innovation sector
- Growth enabling infrastructure

These priorities align with the recommendations in Transport for the North’s (TFN) Independent Economic Review (NIER) and the UK’s Industrial Strategy. At the core of the UK’s Industrial Strategy is the need to harness knowledge, innovation, skills, and infrastructure to drive the local economy, create sustainable jobs and raise productivity. Atlantic Gateway’s three priorities will strengthen the UK’s international competitiveness and unlock further economic potential across the Atlantic Gateway area and the rest of the UK.

Atlantic Gateway is committed to inclusive growth - growth that benefits everyone. Our Board members believe that creating more and better jobs will raise living standards, reduce poverty and make a difference to the long term competitiveness of the area.

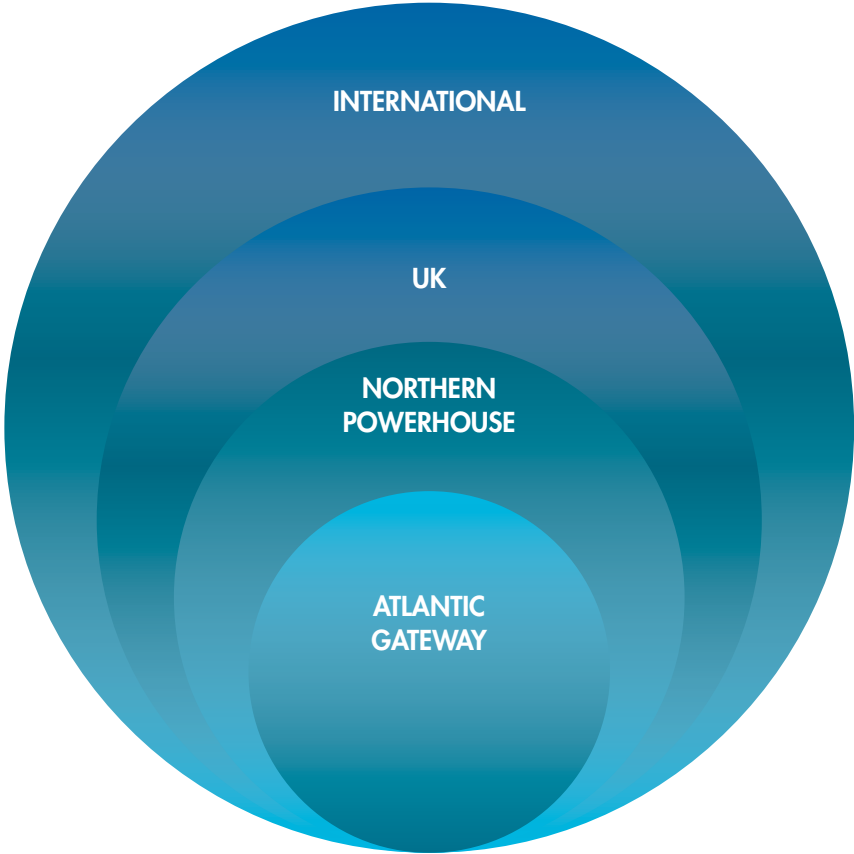


**COLLABORATION IS ESSENTIAL TO UNLOCK GROWTH AND CREATE A SUSTAINABLE INCLUSIVE ECONOMY**

The Atlantic Gateway Partnership has a track record of successfully bringing the right partners together to unlock growth. It successfully supported partners to secure funding for the Northern Hub, finalise a funding package for the Mersey Gateway Bridge and secure funding to enable the River Mersey to be accessed by the largest vessels in the global fleet.

The Atlantic Gateway Partnership supports growth by:

- Providing a united consistent voice on key issues and opportunities, including the development of the Northern Powerhouse
- Focusing on a number of priorities agreed by key partners that have the greatest potential for growth
- Supporting collaboration and providing a platform for bringing together the area’s key partners
- Identifying and unlocking investment opportunities
- Providing independent challenge to influence and inform decision making



The Partnership brings the area’s three LEPs together on critical issues and works with, and inputs into the work of, other critical organisations across the North including TFN, the Northern Powerhouse and business leadership groups.

Delivering inclusive sustainable growth will not be easy. It will require the private and public sectors to work together to play their part in investing in new opportunities and improving productivity.



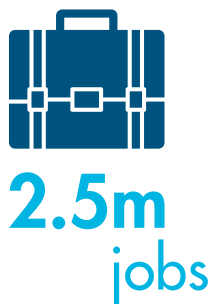
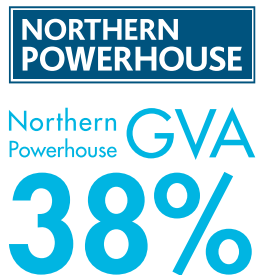
THE ATLANTIC GATEWAY  
HAS FURTHER POTENTIAL  
FOR GROWTH AND IS  
CRITICAL TO THE LONG-  
TERM SUCCESS OF THE UK  
ECONOMY

Located in the North West of England, the Atlantic Gateway area lies to the West of the Pennines and to the South of the Lake District National Park. It has one of the UK's most important coastlines which is a major economic asset for international trade, energy and tourism. It broadly follows the Manchester Ship Canal and the M62/M56 Corridor which serve to connect the three LEP areas within the Atlantic Gateway.

The Atlantic Gateway area has all the characteristics of a national high-growth zone with significant potential for further success: vibrant cities and towns, less than two hours from London by rail, two international airports, a major port, globally competitive sectors and businesses, world-class infrastructure assets, leading universities and extensive research facilities. These are the essential building blocks for growth.

The Atlantic Gateway combines the assets, strengths and ambition of three of the UK's leading economies. With a population of 5.1 million, the area had a combined GVA of £117 billion in 2015 making it one of the most economically important areas of the UK (11% of England excluding London). GVA growth rates across Atlantic Gateway are amongst the highest in the UK at almost 4% per annum. The area also employs more than 2.5 million people with Greater Manchester having the largest number of employees (more than 53%).

The Atlantic Gateway area has eleven universities including two internationally recognised Russell Group Universities; the University of Liverpool and the University of Manchester. Both have significant research capabilities and world-class facilities including the National Graphene Institute, the forthcoming Sir Henry Royce Institute in Manchester and the Sensor City and the Materials Innovation Factory in Liverpool.



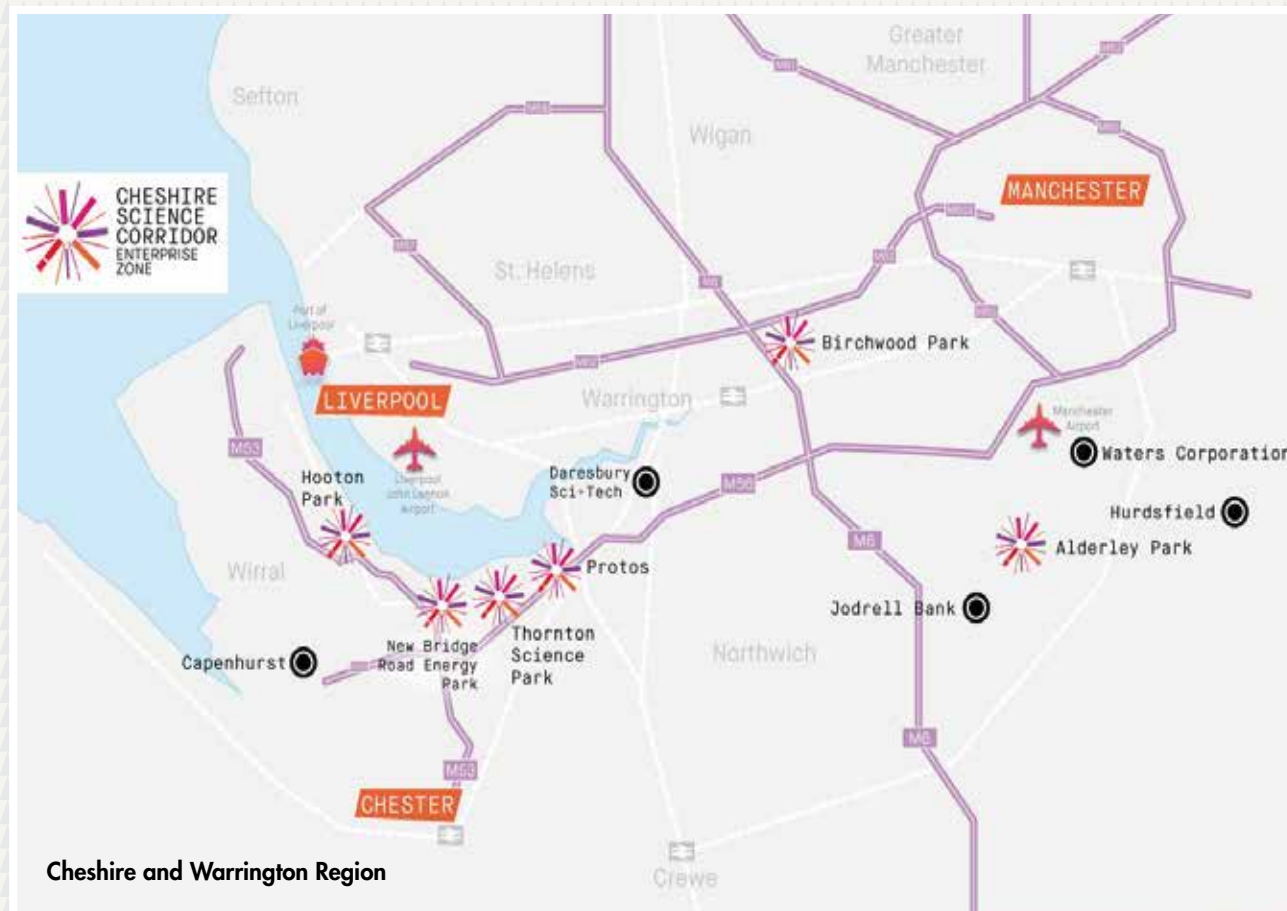


## Cheshire and Warrington

One of North's most important economies with a higher GVA per hour worked than most parts of the UK. It has a number of the UK's leading sectors and includes the Cheshire Science Corridor which spans the length of the area.

Sci-Tech Daresbury is an Enterprise Zone in its own right and is one of the UK's National Science and Innovation Campuses. It is home to one of the world's most powerful super computers supporting the work of major companies in the fields ranging from engineering and consumer goods to healthcare and pharmaceuticals.

The area's transport network is strategically important to the growth of the North and the Atlantic Gateway, with Crewe, one of the UK's major railway interchanges on the West Coast Mainline, identified as a hub for HS2. The Cheshire and Warrington economy has a wide sector base and attracts workers from outside of the area who are reliant upon local transport and connectivity between the Liverpool City Region and Greater Manchester.



## Greater Manchester

The biggest economic area in the Atlantic Gateway and one of the most significant in the UK, with GVA in excess of £56 billion per annum. With a diverse economy, the area is now internationally recognised as a centre for new knowledge and innovation-based service and manufacturing. It has an outstanding financial and professional services sector and the area

also excels in health and life sciences, digital and media, manufacturing and advanced materials. The area is home to Corridor Manchester which is one of the UK's leading innovation districts and has strong links with Alderley Park, the North's leading life science facilities. The area also has a strong logistics sector which underpins the success of its manufacturing and other associated sectors.



Photography Gareth Jones

## Liverpool City Region

Generates annual GVA of £29 billion and combines a rich industrial and trading heritage with a concentration of nationally significant innovation and knowledge assets. Its Port has always played a leading role in the area's economic performance and recent investment in new port facilities, Liverpool2, has resulted in a resurgence of the logistics sector throughout the Atlantic Gateway area and other associated sectors that rely on

port-centric services. Liverpool is home to the Knowledge Quarter which is one the UK's leading science, health, education and technology districts. The City Region developed LCR4.0 to exploit the opportunities of Industry 4.0 known globally as the 'Fourth Industrial Revolution'. LCR4.0 will bring together world class practical support to transform businesses through digital innovation and manufacturing.



## ATLANTIC GATEWAY HAS WORLD-CLASS INFRASTRUCTURE INCLUDING TWO OF THE NORTH'S LEADING GLOBAL GATEWAYS AND A NEW MAJOR BRIDGE

The Atlantic Gateway area was at the heart of the Industrial Revolution and continues to be an infrastructure pioneer with world-class infrastructure including the international gateways of Manchester Airport and the Port of Liverpool. These gateways continue to play a leading role in the economic success of the North following private sector investment of more than £1.5 billion by Manchester Airports Group and Peel Ports Group.

Both international gateways underpin TFN's Strategic Transport Plan to create a more integrated and globally connected northern economy to drive growth.



### PORT OF LIVERPOOL

Peel Ports has recently invested more than £750 million in the Mersey cluster, including £400 million in a new deep-water container terminal, Liverpool2. Liverpool2 is the most centrally located container terminal in the UK, and is capable of handling the largest vessel in the global fleet. Today, over 93% of deep-sea containers enter the UK through southern ports, although only 40% stay in the south. Liverpool2 enables cargos to be shipped closer to their destination from their point of origin. This is a game changing investment, enabling UK logistics to find its natural balance.

The opening of Liverpool2 and the advent of post-Panamax container shipping in Liverpool will mean that the Atlantic Gateway area is more connected with global markets than ever before. This provides opportunities to improve productivity and access to international markets for those sectors that rely on port-centric services. Partners across Atlantic Gateway are committed to working together to maximise these opportunities.



### MANCHESTER AIRPORT AND ENTERPRISE ZONE

Manchester Airport is the North's major international passenger gateway with more than 26 million passengers per year and is also a major logistics hub (Airport City). It is the UK's 3rd largest airport with further growth potential.

The airport has two runways, with capacity to grow passenger numbers to 55 million. A £1 billion Manchester Airport Transformation Programme is underway and will be key to unlocking further potential throughout the Atlantic Gateway, as well as developing world class terminal facilities. Manchester is in the world's top 15 airports in terms of the number of different destinations available to passengers, making it a critical asset not just to the north, but the UK as a whole.

Manchester Airports Group is also developing Airport City which aims to develop logistics, advanced manufacturing, leisure and office space, leveraging the benefits to occupiers of proximity to a global gateway and the airport's strong surface connections. Amazon has recently opened an 800,000 sq ft facility creating 1,500 jobs at Airport City. It is also home to logistics companies including DHL, UCH Logistics and Mountpark Logistics.



### MERSEY GATEWAY BRIDGE

The £600 million Mersey Gateway Bridge in Halton is a six-lane bridge across the River Mersey in the heart of Atlantic Gateway which will transform connectivity across the area.

Opened in 2017, the Bridge is one of the UK Government's national infrastructure priorities and has been recognised as one of the top 100 infrastructure projects in the world.

The new Bridge will improve capacity across the River and will better connect a number of strategic sites throughout the Atlantic Gateway area including its international gateways - Manchester Airport, the Port of Liverpool and Liverpool John Lennon Airport.

The bridge is expected to support 5,000 new jobs in addition to the 470 full-time jobs during the construction phase. The Bridge is located within two miles of Sci-Tech Daresbury, one of the UK's National Science and Innovation campuses.



## PRIORITIES TO TRANSFORM THE ATLANTIC GATEWAY ECONOMY

Three priorities have been identified where the Atlantic Gateway Partnership can add most value and unlock the area's growth potential. These key priorities are also reflected in the NIER and underpin TFN's Strategic Investment Plan.

### LOGISTICS

Atlantic Gateway's logistics sector is world-class and a major driver of success for many of the area's key sectors. An increasing number of businesses are choosing to locate in the Atlantic Gateway area due to its global and local connectivity, its skilled workforce and access to consumer markets.

Liverpool2 is a game-changer for the North's logistics sector. The new facility which opened in 2016, enables the Port of Liverpool to handle the largest vessels in the global fleet. The surrounding rail and road links provide UK-wide access whilst the Manchester Ship Canal provides a unique opportunity to move goods by short-sea shipping from the River Mersey to inland destinations along the Canal. This not only removes traffic from the area's road network, contributing to improved air quality, but also enables further logistics sites to be developed along the Ship Canal creating new job opportunities for people throughout the Atlantic Gateway area. Port Salford in Greater Manchester is the UK's first inland tri-modal logistics site linking Greater Manchester to the Port of Liverpool, providing capacity for further growth of the logistics sector.

Atlantic Gateway already has a number of well-established logistics locations which are critical to the area's competitive advantage including Trafford Park (the largest logistics park in Europe), Omega at Warrington and Knowsley Business Park. Further development opportunities have been identified that are of strategic importance to the growth of the UK's logistics sector and the other sectors that it supports.

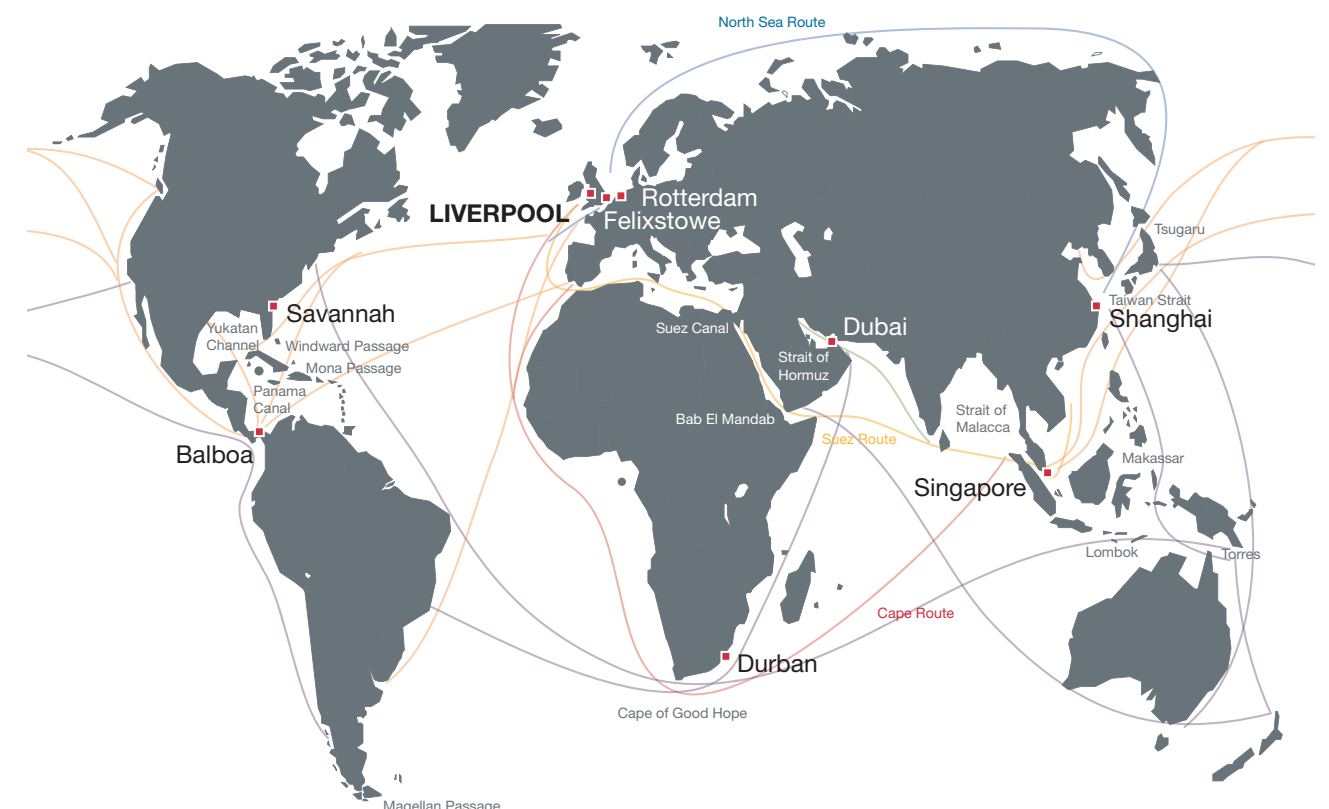
This includes specific sites within Greater Manchester such as Airport City, Port Salford, Logistics North, Heywood/Pilsworth, Wigan (M6 Junction 25/26) and Carrington. In the Liverpool City Region, sites have been identified including various locations across Knowsley and Knowsley Business Park, Parkside and Haydock in St Helens, Liverpool International Business Park and 3MG in Halton. Several locations across Cheshire and Warrington have been identified including further expansion of Omega, several sites in Ellesmere Port and several sites along the Manchester Ship Canal including Port Ince, Port Cheshire and Port Warrington. Improved West-East connectivity is critical to the growth of the logistics sector.

**Improved access in and around the North Liverpool area is critical to the growth of the Liverpool City Region as it provides access to the Port of Liverpool and to future development aspirations in north Liverpool; such as Liverpool Waters, the cruise terminal and Everton Football Club's new stadium.**

**It is an Atlantic Gateway logistics priority and we will continue to work with Highways England, Merseytravel, TfN and other partners to ensure this nationally significant project is delivered with maximum benefit to the local communities.**

## ATLANTIC GATEWAY WILL UNLOCK GROWTH BY:

- Supporting the development of a strategic and joined-up approach to the development of the sector and creation of new jobs
- Identifying and reaching cross-area agreement on key development opportunities and priorities
- Providing leadership on key talent and skills development issues and opportunities
- Identifying specific issues which prevent projects from being delivered
- Supporting the development of stronger economic cases for investment
- Working with key partners including TfN to develop investment proposals to improve capacity and connectivity within, and outside of, Atlantic Gateway
- Supporting the case for investment in key enabling infrastructure
- Influencing national policy to support the logistics sector





## SCIENCE AND INNOVATION

Innovation matters; it drives economic growth, job creation, productivity and competitiveness and over the long-term generates up to 70% of all economic growth.

The Atlantic Gateway area has outstanding strengths, assets and capabilities including its universities and world-leading research and science facilities, talented researchers and scientists, global businesses, a diverse SME base and wide ranging science parks and innovation-driven centres. Its concentration and proximity of science and innovation-based strengths and assets makes it unique within the UK. It is important that the area continues to invest in new opportunities and that it exploits its existing assets to realise its full potential.

With several key hubs including the Corridor Manchester (with its links to Alderley Park and its associated Enterprise zones), the Liverpool Knowledge Quarter, Sci-Tech Daresbury and the



Jodrell Bank

Cheshire Science Corridor, the Atlantic Gateway has globally competitive science assets with further potential for growth. Unlocking growth opportunities is a priority for Atlantic Gateway, especially in relation to essential enabling infrastructure and supporting collaboration to harness the potential of world-leading research to stimulate economic growth and create jobs.

The Government has commissioned a series of Science and Innovation Audits (SIAs) to develop a new approach to regional economic development through analysing key strengths and then

identifying mechanisms to realise further growth potential. Greater Manchester and Cheshire East's key strengths as set out in its SIA are in health innovation, advanced materials, energy, digital and industrial biotechnology. The Liverpool City Region's key strengths include research into infectious diseases, high performance and cognitive computing and materials chemistry.

Atlantic Gateway commissioned a study in 2016 to review opportunities to increase growth potential and the level of commercialisation and economic contribution of science and innovation. This study identified a number of opportunities to improve commercialisation including essential infrastructure improvements to unlock key sites and the development of further facilities to provide a 'home for life' and enable businesses to expand. Building upon the results of the SIAs, Atlantic Gateway will work with partners to strengthen the sector and unlock more of the barriers identified in the report.

Further world-leading opportunities have also been identified to build upon the area's existing strengths including the Pankhurst Centre. The Pankhurst Centre for Research in Health, Technology and Innovation will be a new cross-disciplinary Institute to bring together clinical research with materials science, informatics, engineering and computer science to address major health problems.

Atlantic Gateway Science and Innovation priorities include the development of Corridor Manchester including the Pankhurst Centre and the development of the Knowledge Quarter and Cheshire Science Corridor.

## ATLANTIC GATEWAY WILL UNLOCK GROWTH BY:

- Identifying and reaching cross-area agreement on key issues, opportunities and priorities
- Identifying critical infrastructure requirements to support the sector
- Identifying specific issues which prevent projects from being delivered
- Supporting the development of stronger economic cases for development and investment
- Influencing national policy and funding decisions



National Graphene Institute



Sci-Tech Daresbury



Sensor City



Royce Institute



## INFRASTRUCTURE

High quality infrastructure is vital for economic growth and improved quality of life. Infrastructure is not just about transport but also includes other essential infrastructure including digital connectivity, energy and green and blue infrastructure. Infrastructure in its broadest sense is not only essential for day-to-day life, but it also underpins social mobility, supports growth and is a major factor in attracting foreign direct investment.

A long-term strategic approach to infrastructure investment is key to maintaining business confidence, improving productivity and creating jobs. We support the creation of the National Infrastructure Commission to review and champion infrastructure investment across the UK and continue to contribute to its consultations and reports.

Investment in transport is fundamental to the growth of the economies of the Atlantic Gateway and the North. By creating a series of super-connected economies, people will have better access to more jobs; improving social mobility and prosperity within Atlantic Gateway. We support the work undertaken by TfN and call on the Government to provide more clarity on transport investment across the North. The success of the Atlantic Gateway area is dependent on transport investment to better connect the North.

### THE SPECIFIC PRIORITIES INCLUDE:

- Transport – infrastructure investment to improve connectivity and alleviate congestion on international, West-East, and 'last mile' routes
- Science and innovation – infrastructure to support the further development of key sites including Liverpool's Knowledge Quarter, Corridor Manchester and Cheshire Science Corridor
- Logistics – access to North Liverpool, and development of key sites along the Manchester Ship Canal, Parkside, Carrington, and 3MG
- Strategic sites – key enabling infrastructure to support the further development of key sites including Mersey Waters, Liverpool John Lennon Airport, Warrington Waterfront and Manchester Airport City
- Resilient environment – development of business-critical infrastructure in relation to flood and water management and various projects to realise the full potential of the River Mersey and its catchment including a review of the potential of a tidal barrage on the Mersey



Port Salford Greenway

## BUT DESPITE THE AREA'S SIGNIFICANT STRENGTHS, ASSETS AND POTENTIAL, THE ATLANTIC GATEWAY AREA IS IN DANGER OF FALLING BEHIND ITS MAJOR GLOBAL COMPETITORS WITHOUT FURTHER INVESTMENT



### STRATEGIC CONNECTIVITY AND CAPACITY

Success across the Atlantic Gateway area, and the Northern Powerhouse, will be constrained unless improvements can be made to connectivity and capacity across the area's road and rail networks.

West-East transport improvements connecting the Atlantic Gateway area to the rest of the North are essential to help create a counterweight to London and rebalance the economy. North-South transport improvements will also provide additional capacity for the movement of goods and passengers. We strongly support the proposals outlined in TFN's Strategic Transport Plan including the development of a programme-based approach to evaluating transport investment in the North.

Atlantic Gateway supports the proposals for investment in High Speed Rail 2 (HS2) and Northern Powerhouse Rail (NPR). Both schemes will open-up new opportunities enabling more people to reach their full potential.



### ACCESS TO STRATEGIC SITES

Atlantic Gateway partners have identified a number of strategic sites which will require public sector investment to unlock further growth potential. We will continue to work with TFN, local transport authorities and the area's LEPs on these opportunities to drive growth.



### SKILLS AND TALENT PIPELINE

Whilst connectivity improvements will create new opportunities for people and reduce travel to work areas, this will only go part-way to address potential future skills and talent challenges. The Atlantic Gateway Partnership will continue to consider specific issues that may impact upon the growth of its two priority sectors and delivery of its infrastructure programme.



### INTERNATIONAL COMPETITORS

Global competitor regions are investing heavily to improve essential infrastructure, introduce new technologies and attract international investment. The creation of a Northern Powerhouse strategy and the establishment of TFN represent a significant step forward. The UK is one of the most economically and politically stable investment locations in the world but further investment in infrastructure is essential to ensure that the UK can remain competitive.



### PLANNING AND POLICY

Business and sector growth often defies conventional geographical boundaries. Partners within the Atlantic Gateway have a good track record of working together to develop a more strategic and joined-up approach to new development opportunities. Atlantic Gateway's priority projects should be reflected in regional spatial frameworks and growth plans including supporting infrastructure investment plans.



# ATLANTIC GATEWAY – THE NEXT PHASE

The Atlantic Gateway area is truly global with extensive world-wide trading partners and outstanding global connectivity. The Liverpool City Region has signed a partnership agreement with Panama which is strategically important due to the recent widening of the new Panama Canal and the opportunities that it will bring to the North of England. The Atlantic Gateway area must be prepared to seize these opportunities and world-class infrastructure will play a major role in achieving this.

Partners in the Atlantic Gateway area have a strong track record of securing investment from the private sector and from Government; momentum is on our side. We would like to continue to work in partnership with Government and others to ensure that the Atlantic Gateway area can continue to build upon its international relationships and further strengthen its, and the UK's position as a global powerhouse.

We ask Government to:

- Continue to recognise the Atlantic Gateway corridor as one of the North's and the UK's most significant high growth areas
- Support TFN's Strategic Transport Plan including critical investment to improve access to the North of Liverpool, improved West-East connectivity and proposals for Northern Powerhouse Rail
- Support the development of new science and innovation opportunities within the Atlantic Gateway area including the Cheshire Science Corridor, Corridor Manchester and the Knowledge Quarter
- Support investment in key enabling infrastructure which will drive growth
- Provide essential funding to enable Atlantic Gateway to develop action plans for its key priorities
- Work with the Atlantic Gateway Partnership to unlock key barriers to growth on identified priority projects, including the development of innovative funding mechanisms to leverage investment from the private and public sectors.





BOLTON  
BURY

MANCHESTER  
OLDHAM

ROCHDALE  
SALFORD

STOCKPORT  
TAMESIDE

TRAFFORD  
WIGAN



Infrastructure  
and Projects  
Authority



WARRINGTON  
Borough Council



LIVERPOOL  
CITY REGION  
COMBINED AUTHORITY