

Warrington

Community Safety Partnership Plan 2021 to 2024

“Committed to keeping Warrington a Safe Place to live, work and visit”

2023 Refresh

Contents

About Warrington CSP	4
Looking back over 2022	5
Key Activities Delivered Year 2: 2022	7
Key performance indicators.....	8
Ward Crime and ASB rates	9
Looking forward our 2021-2024 priorities (2023 refresh).....	10
Looking forward - what we will do and how we will measure progress	11

Our partnership priority is to work towards preventing crime and disorder occurring in the first place and equally to assist and protect those who sadly fall victim and those communities that experience anti-social activities, which can negatively affect a neighbourhood.

There has been new pieces of legislation, which the partnership are exploring, and working together to meet the requirements. This includes the Police, Crime & Sentencing Bill, which introduced a duty for CSP's to analyze serious violence in their area and produce a Serious Violence Strategy. Martyn's Law (Protect Duty) was introduced following the outcomes of the Public Inquiry relating to the tragic Manchester Arena attack and campaigning by the mother of Martyn Hetts who was sadly killed. Warrington Partnership are committed to working together to ensure our communities are as safe as possible, that Warrington is a safe place to visit, work and live in.

As we enter the final year of our plan, I am pleased to acknowledge that 2022 continued to reflect positive individual agency and partnership working. We continue to address anti-social behaviour (ASB), which includes applying our robust Cheshire Police and Council Youth ASB process, having a strong partnership tactical and co-ordination group (PTAC) which tackles all areas of ASB and is well represented including working with our social housing landlord colleagues.

First time entrants into the Youth Justice system continue to fall and Warrington's compares favourably regionally and nationally.

Addressing Violence, Abuse and Intimidation against women and girls (VAIWG) continues with further funding secured from the Home Office by the Cheshire Police & Crime Commissioner as part of the Safer Streets 4 allocation of which Warrington will benefit.

We will continue to work with our partners across Cheshire and neighboring authorities to tackle cross boarder issues such as serious organised crime, County Lines and address underlying causes to crime and re-offending which includes addressing Drugs, lack of suitable accommodation, poor or lack of suitable Education, Training & Employment, Mental Health and Finances.

Paula Worthington

Chair of Warrington Community Safety Partnership

About Warrington CSP

'Well Warrington' - the Health and Wellbeing Strategy for Warrington

2019 – 2023 sets out Warrington's partnership vision of *"Warrington is a place where we work together to create a borough with stronger neighbourhoods, healthier people and greater equality across all our communities"*.

The Community Safety Partnership are committed to keeping ***Warrington as a safe place to live, work and visit, ensuring that the most vulnerable are safe and feel safer.***

Warrington is one of 4 local authorities and forms one of nine local policing units within the Cheshire Police area and our CSP priorities are aligned with that of the Police & Crime Commissioner for Cheshire.

What is the Community Safety Partnership?

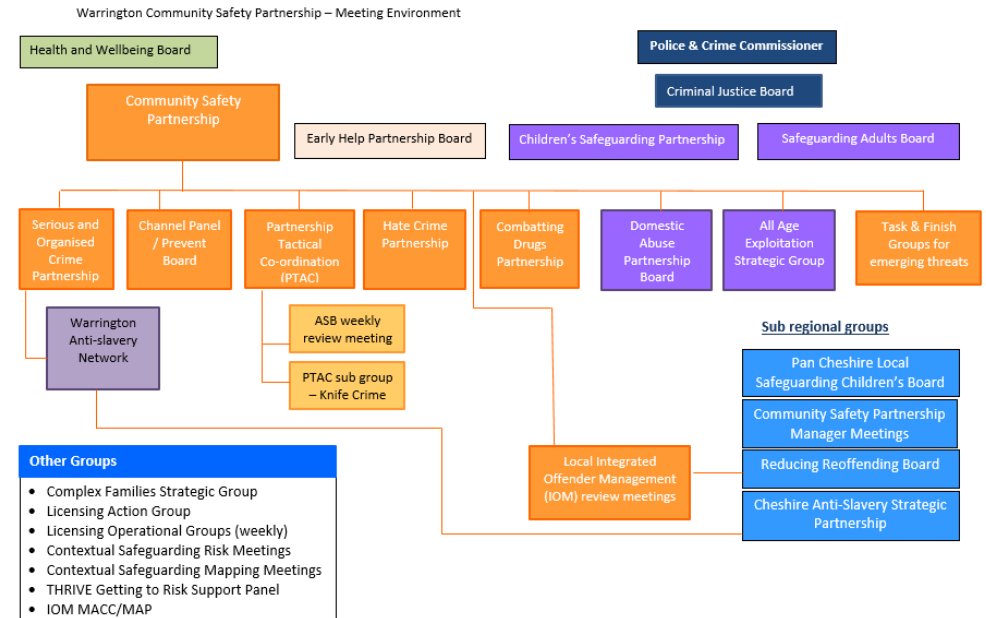
The CSP is the local multi-agency partnership that has been established to tackle community safety issues within Warrington. It has a statutory obligation under the Crime and Disorder Act 1998 (and subsequent legislation) to work in partnership to address issues of:

- Crime and disorder
- Anti-social behaviour
- Behaviour adversely affecting the environment
- Substance misuse
- Reducing re-offending

The partnership meets 4 times a year and is supported by a range of groups as shown opposite. Along with other supporting partner agencies, some of the key organisations that make up the CSP include:

- Warrington Borough Council
- Cheshire Constabulary
- Cheshire Fire and Rescue Service

- Bridgewater NHS and Integrated Care Boards
- Warrington Public Health
- Youth Justices Service
- NW National Probation Service



The CSP has a statutory duty to outline the Partnership priorities and delivery plans, which are determined by a statutory annual Community Safety Strategic Assessment; this is completed locally.

The overall purpose is to 'add value' to the work already being carried out by the separate partner organisations.

Looking back over 2022

Warrington Community Safety Partnership (CSP) saw an 2% decrease in overall recorded crime volumes in 2022 with 17,357 offences (-292 less offences) when compared with 2021. This continues the reduction trend seen since 2019, due in part, but not entirely, to the COVID-19 pandemic and relaxing of restrictions. Volumes between 2022 (17,357) and 2018 (19,410) have fallen 11% (2,053 fewer offences). Warrington is about the same as average when compared with our Most Similar Groups.

The highest crime rates per 1,000 population are still within the inner areas of Warrington (Bewsey and Whitecross; Fairfield and Howley) and the north of Warrington (Orford). This is a similar picture with regard to anti-social behaviour (ASB) and Cheshire Fire Deliberate fire data.

Volume of ASB incidents across Warrington CSP have reduced by 37.5% (-1,429 incidents) in 2022 when compared with 2021. This downward trend is also seen across all 4 CSPs within the Cheshire area. ASB reports made to Warrington Council Community Safety Team reduced slightly to 217 in 2022, compared with 262 in 2021 (-17% decrease) and remains 62% higher than 134 reports during 2019. Warrington Council Fly-tipping data shows 1,209 reports compared with 2019 (1,386) with 2020 (1,801), 2021 (1578). The volumes of Youth-related Police recorded ASB incidents across Warrington CSP reduced by 2% (11 fewer incidents) in 2022 when compared with 2021. This overall reduction has come from three specific Beat Team Clusters; Warrington West where 64 fewer incidents were recorded (48% decrease). Criminal Damage and Arson offence volumes have

fallen by 11% (-174 offences) in 2022 compared to 2021. Cheshire Fire & Rescue saw a 6% reduction in deliberate fires in 2022 at 186 compared with 2021 (197) and overall reduction since 2020 (246) and 2019 (266). Warrington's Partnership Tactical & Co-ordination Group continue to work together to combat ASB.

Warrington CSP has experienced a decrease in the volume of recorded Hate crimes in 2022 compared to 2021 (-12%, 67 fewer offences). This has resulted in a small reduction in the number of offences per 1,000 population (2.3 verse 2.6) although this is still slightly higher than the Force crime rate (2.0). Racial' Hate Crimes are the most frequent issue in each of the Beat Team Clusters. There has been a review and refresh of the Hate Crime Partnership.

Bike thefts have increased in 2022 (273 offences) by 32% higher than offences in 2021 (66 more offences). However, volumes are still lower than 2020 (318 offences) and 2019 (468 offences). Targeting of offenders and bike marking events in the community continue.

'Violence against the Person' (VAP) decreased slightly across Warrington CSP by 2% (123 fewer offences) in 2022 (7,883) compared to 2021 (8,006). Large reductions were seen in Warrington North (-14%, 230 fewer offences) whilst Warrington Town Centre and Warrington East both recorded increases of more than 100 offences. Latest data (2018/19-2020/21) for Hospital admission for violence (including sexual violence) per 100,000 population is 62.7 which places Warrington in the top (worst) quartile when compared to all UK unitary

authorities, but around the same as the North West rate of 61.6¹. Warrington's rate of admission is significantly higher than England (41.9 per 100,000).

A total of 126 Possession of weapons offences were recorded across Warrington CSP this year, this represents a 147% increase (or 74 more offences) in comparison to last year (52 offences). When we consider the crime rates per 1,000 population, the rate in Warrington CSP (0.6) is slightly higher than the Force rate (0.5). It is noted, however, that 2019 volume was 110 offences recorded, with 2020 and 2021 being notable lower at 67 and 52 respectively. Warrington remains lower than average when compared to its Most Similar Groups².

¹ LG Inform – Warrington profile, March 2023

² Police.uk, YE September 2022

Key Activities Delivered Year 2: 2022

Preventing and responding to crime and people feel safe	Anti-social behaviour & public order	Domestic Abuse, Stalking and Sexual Offences	Protecting our communities from harm
Increased level of referrals to substance misuse services via test on arrest, which was a CSP priority task	WBC Community Safety rolled out training to partnership agencies and Head Teachers Conference – improving links in addressing Youth ASB	Warrington's Authentic Voice model held as best practice and included in the SaveLives National toolkit.	Trading Standards partnership work around the risk of loan sharks and promotion of credit unions
A Task and finish group with WBC Community Safety, Public Protection and Cheshire Police visited 17 retailers visited (16 of which were within the Town Centre) to review knife issues related to display and sale of knives.	The Partnership now have 5 Operational PTAC Redeployable CCTV cameras for hotspot monitoring and disruption and these are proving an effective disruption tool	Developed and mobilised a football/WRC campaign, which included working with Licensing colleagues, to distribute stickers in 300 taxis, licensed venues hosting England matches, and mobilised resource to local hospital/GP Services.	Partners are working together to provide a coordinated programme to schools on subjects such as ASB, county lines and exploitation which will include consideration of Year 6 Primary school provision.
Work of the Cheshire Cybercrime Unit within the Cheshire area to help promote key safety messages			Continual workforce development across the partnership for training relating to county lines, cuckooing and exploitation
County Lines / Knife crime plays have taken place in schools across the Borough and a knife crime first aid video was commissioned and filmed in Warrington	A new Youth Criminal Behaviour Order Protocol was developed as part of the partnership ASB management arrangements	Pan Cheshire Safe and Together Launch in September 2022 hosted by Warrington. Following the roll out Warrington has 26 Champions, who can also deliver short briefings sessions	Childhood Exploitation – OPCC commissioned/CSP funded Educational Mentor Programme to reduce serious violence in young people
	Award for TAP OUT received from Street Games.	Ask for Ani / safe spaces locations - 6 ³ across Warrington pharmacies and the job centre	Ask Angela Campaign operates within the Borough for anyone feeling vulnerable in pubs or clubs using a code phrase to alert staff

³ At the time of plan development

Key performance indicators

Crime/Incident	2019	2020	2021	2022	2022 rate	2021 – 2024 aims	Cheshire Rate ⁴	England rate ⁵	Most Similar Group Comparison – YE Sept 22
All Crime	20,088	18,001	17,649	17,357	82.3	Maintain/Reduce	78.9		Same as average
Drug Offences	392	385	344	412	2.0	Maintain	1.8	3.0	Same as average
Violence against the person	7,663	7,858	8,006	7,883	37.4	Reduce	36.2	36.0	Violence and sexual offences: Higher than average
Sexual Offences	674	648	705	751	3.6	Maintain/Reduce	3.3	3.0	
Possession of weapons	110	67	52	126	0.6	No target set	0.5	1.0	Lower than average
Knife crime ⁶	79	87	108	128	0.6	Reduce	0.5	-	-
Domestic Abuse crimes (Police data)	3,410	3,508	3,225	3,145	14.9	Increase reporting	14.7	-	-
Burglary (Residential)	735	537	527	423	2.0	Maintain	2.2	3.0	Burglary: Lower than average
Burglary (Business & Community)	292	197	147	185	0.9	Maintain	0.7	1.0	
Theft from a motor vehicle	520	428	390	327	1.6	Maintain	1.2	4.0	Vehicle Crime: Lower than average
Theft of a motor vehicle	297	197	213	269	1.3	Maintain	1.0	2.0	
Shoplifting	1,275	1,028	750	726	3.4	Maintain/Reduce	4.1	5.0	Lower than average
Bicycle theft	468	318	207	273	1.3	Maintain/Reduce	0.9	1.0	Same as average
Hate Crimes	442	445	551	484	2.3	Maintain / Increase reporting	2.0	2.6 ⁷	-
ASB	4,065	5,311	3,803	2,374	11.3	Reduce	11.9	-	-
ASB environmental (police)	159	317	270	162	0.8	Maintain/Reduce	0.7	-	-
Public order	3,346	2,917	2,913	2,599	12.3	Reduce	12.0	10.0	Higher than average
Criminal Damage & Arson	2,012	1,692	1,536	1,362	6.5	Maintain/Reduce	6.8	9.0	Lower than average
Deliberate fire activity	266	246	197	186	0.9	Maintain/Reduce	1.0	-	-
First time entrants - Youth Justice system	26	19	24		121 ⁸	Maintain	-		-
Average IOM Cohort offenders	-	44	37	38	-	Maintain/Increase	-	-	-
Public Protection reported scams	83	60	74	25	-	-	-	-	-
Victims of doorstep crime (reported)	28	35	18	6	-	-	-	-	-

⁴ Rates from Cheshire Constabulary for Warrington and CP Force rate, YE December 2021,

⁵ Rates from ONS (excludes fraud) police force data tables, YE Sept 21

⁶ Knife crime - Home Office definition of a Knife Crime. (Use of knives and other sharp instruments) this includes Violent and Sexual Offences only.

⁷ England and Wales Hate crime rate per 1,000 population YE March 2022)

⁸ Rate per 100,000 population

Ward Crime and ASB rates

The following tables provide recorded crime and anti-social behaviour rates per 1,000 population for Warrington Police beats. Data sourced from Cheshire Constabulary. The inner wards of Warrington continue to have higher rates of crime and anti-social behaviour.

1). Crime

Police Beat	Recorded Crime (2022)	%	Crime Rate (1,000 pop)
Appleton	339	2%	33.2
Bewsey And Whitecross (inc. Town Centre beat)	4375	25%	297.9
Birchwood	883	5%	85.4
Burtonwood And Winwick	631	4%	99.8
Culcheth Glazebury And Croft	610	3%	52.2
Fairfield And Howley	1944	11%	128.7
Grappenhall And Thelwall	223	1%	23.0
Great Sankey North	170	1%	28.1
Great Sankey South	525	3%	50.3
Hatton Stretton And Walton	215	1%	68.1
Latchford East	851	5%	86.9
Latchford West	618	4%	81.5
Lymm	798	5%	63.0
Orford	1136	6%	108.0
Penketh And Cuardley	337	2%	41.1
Poplars And Hulme	969	5%	88.5
Poulton North	721	4%	71.0
Poulton South	322	2%	47.9
Rixton And Woolston	557	3%	63.1
Stockton Heath	285	2%	46.3
Westbrook	430	2%	64.3
Whittle Hall	702	4%	46.0
Warrington CSP	17641	100%	83.5

2). Anti-social behaviour

Beat	Grand Total	%	ASB incident rate per 1,000 pop.
Appleton	63	3%	6.2
Bewsey And Whitecross (inc. Town Centre)	622	26%	42.4
Birchwood	107	5%	10.3
Burtonwood And Winwick	54	2%	8.5
Culcheth Glazebury And Croft	96	4%	8.2
Fairfield And Howley	219	9%	14.5
Grappenhall And Thelwall	29	1%	3.0
Great Sankey North	28	1%	4.6
Great Sankey South	60	3%	5.8
Hatton Stretton And Walton	18	1%	5.7
Latchford East	78	3%	8.0
Latchford West	80	3%	10.6
Lymm	106	4%	8.4
Orford	151	6%	14.3
Penketh And Cuardley	54	2%	6.6
Poplars And Hulme	149	6%	13.6
Poulton North	97	4%	9.6
Poulton South	53	2%	7.9
Rixton And Woolston	63	3%	7.1
Stockton Heath	49	2%	8.0
Westbrook	53	2%	7.9
Whittle Hall	145	6%	9.5
Warrington	2374		11.2

Looking forward our 2021-2024 priorities (2023 refresh)

Priority themes	Theme 1 Preventing and responding to crime and people feeling safe	Theme 2 Anti-social behaviour & public order	Theme 3 Domestic Abuse, Stalking & Sexual Offences	Theme 4 Protecting our Communities from harm
<p>Priorities</p>	<ul style="list-style-type: none"> ▪ Integrated Offender Management, addressing root causes. ▪ Early Help and diversionary approach to keep young people away from the criminal justice system. ▪ Safer streets and community engagement - designing out crime and disorder. ▪ Tackling Violence, Abuse & Intimidation against Women & Girls ▪ Tackling existing and new threats of Serious & Organised crime, County Lines and Modern Slavery. ▪ Tackling online crime, scams and exploitation. ▪ Violence and knife crime (risk and perception). ▪ Day and night time economies, particularly town centre. ▪ Tackle bicycle thefts. 	<ul style="list-style-type: none"> ▪ Early Help, prevention and place based initiatives. ▪ Consistent, multi-agency coordinated problem solving. ▪ Effective ASB case management and response by maximizing use of tools and powers. ▪ Divert young people from persistent ASB and entering the youth justice system. ▪ Maintain links with Contextual Safeguarding in addressing individual and placed based disruption. ▪ Ensuring victim focused processes. 	<ul style="list-style-type: none"> ▪ Delivery of DA Strategy <ul style="list-style-type: none"> - Priority 1 (Awareness, Intervention and Prevention); - Priority 2 (Safe Housing) - Priority 3 (Protection & Support) - Priority 4 (Reducing Reoffending) - Priority 5 (Workforce Development) - Priority 6 (Partnership working, strategic co-ordination and performance monitoring) ▪ Sustainable support services for all affected by DA – victims, children/young people and perpetrators. ▪ Understand the needs of female offenders who are also victims of DA ▪ Tackle Violence, Abuse & Intimidation against Women & Girls ▪ Reduce the risk of repeated abuse through perpetrator programme ▪ Relaunch of Operation Encompass ▪ Identifying hidden communities (elder abuse, affluent communities). 	<ul style="list-style-type: none"> ▪ Develop a multi-agency approach to ‘all age’ exploitation in order to protect individuals vulnerable to any form of exploitation or abuse, including loan sharks. ▪ Ensure our communities know how to report crime and seek support and safe spaces confidentially. ▪ Ensure all agency’s officers are trained in key issues and processes. ▪ Engagement and training with schools, parents and businesses with regard to exploitation. ▪ Hate Crime, with emphasis on encouraging and supporting disability hate crime reporting. ▪ Ensuring safer streets for all and research into street harassment and violence against women and girls within the town.
	<ul style="list-style-type: none"> • Continue effective partnership working, to meet the needs of our diverse communities, emerging local threats, issues and to addressing underlying causes such as substance misuse, homelessness, mental health, vulnerabilities, and deprivation. • Horizon scanning - respond to emerging threats, new legislation (e.g. Police Crime Sentencing and Courts Bill, Martyn’s Law (Protect Duty), Online Safety Bill, Victims Bill and implement within CSP management arrangements. Seek out additional funding and make appropriate bids to support Community Safety priorities. • Review the way we collect and use data and intelligence to inform strategies, plans and reporting. 			
<p>Links to Cheshire Police & Crime Commissioner’s Plan 2021-2024</p>	<ul style="list-style-type: none"> ✓ Tackle ASB, neighbourhood and property crime ✓ Disrupt serious and organised crime ✓ Prevent violent crime ✓ Protect rural communities ✓ Tackle cyber crime and online scams ✓ Tackle business and retail crime 	<ul style="list-style-type: none"> ✓ Support victims at every stage of the process ✓ Ensure every crime is recorded accurately ✓ Increase ‘Action Taken’ on crime ✓ Reduce reoffending 	<ul style="list-style-type: none"> ✓ Tackle violence against women and girls ✓ Extend mental health support ✓ Protect children and young people ✓ Protect adults at-risk ✓ Tackle hate crime and bullying 	

Looking forward - what we will do and how we will measure progress

Priority Themes	Theme 1 Preventing and responding to crime and people feel safe	Theme 2 Anti-social behaviour & public order	Theme 3 Domestic Abuse, Stalking & Sexual Offences	Theme 4 Protecting our Communities from harm
Key things we will do	<ul style="list-style-type: none"> ▪ Continue with increased levels of referrals to substance misuse services. ▪ Develop a Combatting Drugs Plan. ▪ Explore plans around the 'Addictions' agenda (alcohol, drugs and gambling). ▪ Use multi-agency intelligence and powers to disrupt organised crime and county lines. ▪ Deliver County Lines/knife crime workshops to High Schools and Primary schools. ▪ Refresh Warrington's Knife Crime Plan. ▪ Delivery of Safer Streets 4 project and continued focus of addressing VAIWG ▪ Support strategies and plans, which include Modern Slavery, Contextual Safeguarding and Hate Crime. ▪ Tackle hospital based violence and demand ▪ Crime prevention and intervention – raising public awareness and training about cyber-crime, fraud and scams. ▪ Maximise opportunities for community engagement. ▪ Task in-depth look at online crime. ▪ Promoting work to eradicate MS including tackling MS in supply chains and transparency statements. ▪ Task & Finish Groups to respond to emerging issues/localized issues. 	<ul style="list-style-type: none"> ▪ Monitor the use of ASB tools & powers (e.g. parent letters, panels, Acceptable Behavioural Contracts, Community Protection Warnings/Notices, public space protection orders). ▪ Keep up to date PCSO, PC and professionals training with regard to Youth ASB process, ASB, trading standards processes. ▪ Maintain youth ASB links with early help and diversionary/complex youth intervention. ▪ Training to support early opportunities for ASB/Neighbour Dispute mediation. ▪ Embed the Criminal Behaviour Order / Injunction procedure for young people. ▪ Work with Pan Cheshire colleagues to develop a common approach to ASB in line with ASB Tools & Powers Guidance. ▪ Continue analysis of ASB to inform: <ul style="list-style-type: none"> - Hotspot Locations - Task & Finish groups • Tackle off road scrambler bikes in the Borough. • Key engagement with representative youth groups. • Work with Cheshire colleagues to support joined up Water Safety Plans and education. 	<ul style="list-style-type: none"> ▪ Increase WBC emergency bed space to meet demand and statutory obligations. ▪ Explore ways of engaging with victims / perpetrators standard/medium risk and those unknown to services (hidden groups). ▪ Whole Family Approach (Engage) – embed champions and further roll out. ▪ Enhance staff confidence and skills in perpetrator management as part of a whole family approach via programme Engage. ▪ Improve understanding of the particular needs of older DA victims and those with care and support needs. ▪ Understand the needs of children and young people who abuse parents/siblings, experience teen abuse (victim, perpetrators), ensuring effective support available for CYP. ▪ Continue to engage with local GPs to improve primary care response. ▪ Embed the complex needs programme to provide continue support for victims with complex needs in refuge accommodation. ▪ Perpetrator Programme, with focus on developing a programme for high risk/high harm offenders 	<ul style="list-style-type: none"> ▪ Continue developing multi-agency intelligence, boards and structures to identify individuals who are potentially vulnerable to any form of abuse/exploitation. ▪ Develop an All Age Exploitation Strategy. ▪ Develop a Combatting Drugs Plan. ▪ Ensure multi-agency training plans in place and delivery (PREVENT & Channel training strategy, Contextual Safeguarding, Modern Slavery) to offer understanding of risk factors, identification and prevalent forms of exploitation. To include professionals, businesses and other agencies. ▪ Support delivery of plans in place for areas such as Hate Crime, PREVENT Strategy, CS Safeguarding development plan. ▪ Support those involved in crime and ASB on transition to adulthood (18 to 25 years). ▪ Support integrated approach to commissioning - e.g. alcohol, drugs. ▪ Support and implement the Cheshire hidden harm strategy. ▪ Promote slave-free supply chains and transparency statements. ▪ Promote the use of anonymous ways to report crime. E.g. Crime Stoppers and seek confidential support, particularly for young people.

How will we measure progress

Performance management – monitor volumes and benchmarking data. **Perception data** through neighbourhoods, police surveys and engagement with representative and community groups. **Outcome reporting** – evaluate projects/schemes