

Place Plan 2023/24



Living Well in Warrington
Connecting: People - Places - Resources

Warringtontogether
Together for a happier and healthier **Warrington**

Connecting people, places and resources to support people
to **live well** in Warrington



Warrington Place Vision

Warrington is a place where we work together to create stronger neighbourhoods, healthier people and greater equality across our communities.

Our ambition for the people of Warrington

- ✓ To live in healthy, safe and sustainable communities.
- ✓ Have the skills and resources needed to improve their life chances.
- ✓ Value wellbeing and active independent lives.
- ✓ Improved quality of life through accessing appropriate, quality care when and where they need it.

Our areas of focus

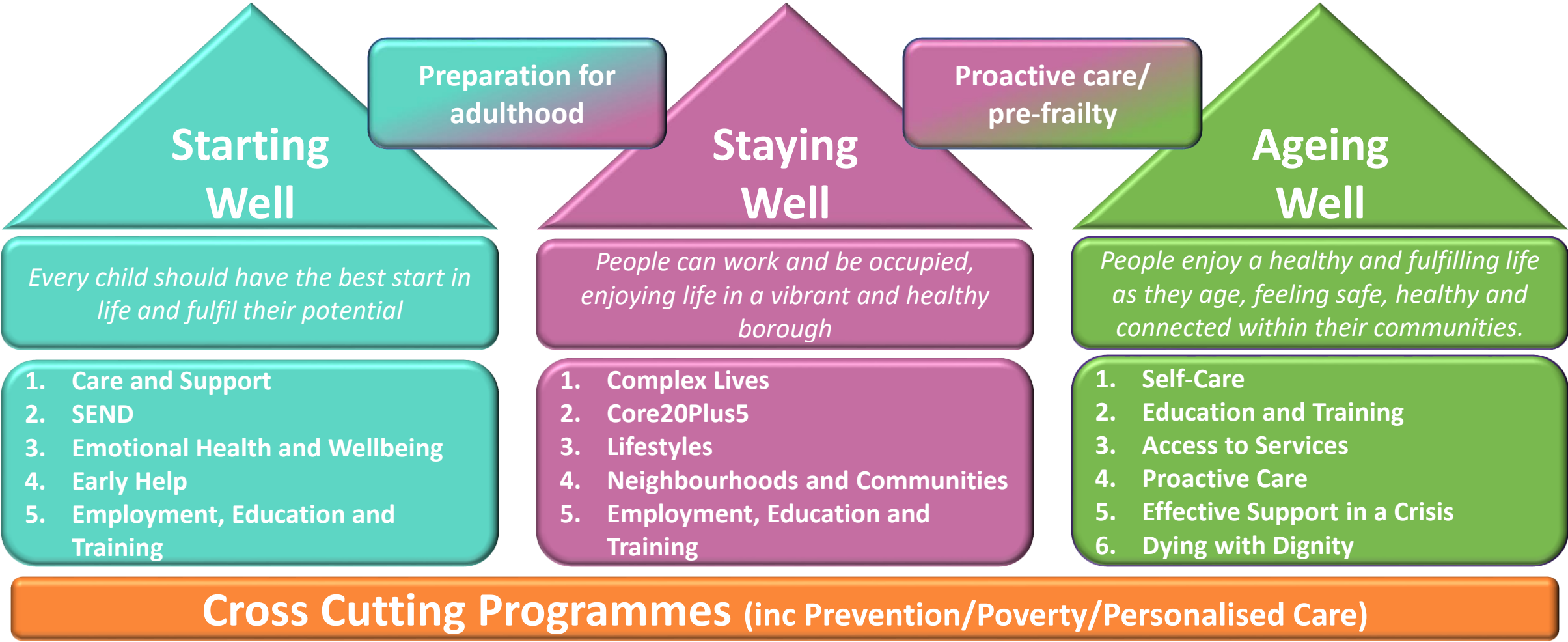
1. Improving population health and supporting vulnerable communities and individual.
2. Dealing with rising demand and responding to the changing needs and expectations of the local population.
3. Improving and maintaining quality services and managing more complex needs locally.
4. Sustaining and growing our workforce, volunteers and community led services.
5. Ensuring good access to early help that will prevent crisis and needs from escalating.
6. Maintaining an effective and financially sustainable health and care system, with budgets under pressure.

Connecting people, places and resources to support people to **live well** in Warrington



Our Place Programme Structure

Living Well in Warrington



Our Programme Delivery

Starting Well

1. Complex Needs Hub Project
2. No Wrong Door Project
3. Autism in Schools Project
4. Graduated Response School Reviews
5. Baby & Infant Bonding Offer
6. Refresh 0-19 Strategy, Plan & Specification
7. Community Impact Assessment Findings of National Programme
8. Review of Exclusions & permanent Exclusions
9. Placement Offer for Children in Care
10. Core20Plus5
11. Decriminalisation of Children in Care
12. Embedding Systemic Practice in Social Work
13. Special School Nursing Review
14. Future in Mind Project
15. Family Hub Mobilisation
16. Sick Child Pathway
17. Attendance Duties for All Schools
18. Review Current Children With Disability Arrangements
19. Care Review

Staying Well

1. Adults Mental Health Strategic Plan
2. Healthy Weight Declaration for Place
3. Core 20Plus5
4. Cardiovascular Disease prevention
5. Complex lives
6. Learning Disability
7. Autism
8. Complex Pain
9. Lifestyles
10. Physical activity
11. Substance misuse, addiction
12. Tobacco
13. Housing and Homelessness
14. Employment, Education and Training
15. Neighbourhoods and communities
16. Pre-frailty

Connecting people, places and resources to support people to **live well** in Warrington



Our Programme Delivery

Ageing Well

1. Embedding the eight Frailty Indicators in Every Contact:
Education, training and ICTs
2. Development of the Living Well Hub
3. Integrated Community Teams and Proactive Care Planning
4. Implementing 'One Front Door'
5. Supporting People to Make the Most of their Medications
6. Implementing the New Operating Model for Discharge
and the Transfer of Care Hub
7. Effective Discharge
8. Virtual Wards
9. Enhanced Health in Care Homes
10. Dying Well with Dignity
11. Dementia Strategic Plan development
12. Falls prevention

Cross-cutting

1. Living Well Physical and Virtual Hub
2. Mobilising the Voluntary, Community, Faith and Social
Enterprise Sector (VCFSE)/mapping the VCSE sector
3. Poverty Strategic Plan Development
4. Establishing a Truth Commission
5. Prevention Strategic Plan Development
6. Personalised Care Strategic Plan Development
7. Connecting the Wellbeing and Social Prescribing Offer
8. Information, resources and skills

Connecting people, places and resources to support people
to **live well** in Warrington



Our Place Enabler Programmes

Workforce and OD

Programme Priorities

We maximise the benefits from information and technology

Ensure professionals directly involved in health and social care have access to the most up-to-date patient information

Ensure we utilise technology effectively to help support self-care and personal responsibility for health

Delivery

Workforce and OD Enabler Group

1. Place Workforce Strategic Plan development
2. Mapping of One Workforce
3. Wellbeing resources library

Connecting people, places and resources to support people to **live well** in Warrington



Our Place Enabler Programmes

Digital and Technology Enabled Care

Programme Priorities

We have a valued, well-trained and supported workforce that is fit for the future

Ensure our collective workforce has shared values and principles and common aims

Ensure we have robust collaborative workforce planning which fully harnesses the potential of the third sector

Ensure we fully utilise our community assets and volunteering

Delivery

Digital Enabler Group

1. Digital Strategic Plan development
2. Collaborative Working
3. Shared Care Records
4. ORCHA App
5. Digital Social Care Records

Connecting people, places and resources to support people to **live well** in Warrington



Our Place Enabler Programmes

Intelligence and Analytics

Programme Priorities

We invest in the right intelligence to understand our local population

Ensure robust evidence and intelligence is available to inform strategic priorities for health and wellbeing

Ensure gaps in knowledge and intelligence are addressed and appropriate insight is generated

Delivery

Business Intelligence Network

1. Programme dashboards
2. Joint Outcomes Framework
3. BI Capacity
4. Information Sharing
5. Report consolidation

Connecting people, places and resources to support people to **live well** in Warrington



Our Place Enabler Programmes

Estates

Programme Priorities

We utilise our collective estate so that it best supports local health and social care need

Ensure the best use of land and property assets facilitating joint working or alternative uses where appropriate

Ensure our local estate can support the Health and Social Care transformation and integration agenda, respond to developing service models, including committing to a new purpose built modern hospital

Delivery

Estates Enabler Group

1. Asset Mapping Tool
2. Primary Care Estates Plan
3. H&SC Estate Development Plan

Connecting people, places and resources to support people to **live well** in Warrington



Our Place Enabler Programmes

Communications and involvement

Programme Priorities

We will give everyone in Warrington a voice that is actively and equally listened to

Listening to people to understand issues and discussing ideas for change

Designing with people and incorporating their ideas into the final approach

Working together in an equal partnership with people with lived experience from start to finish

Delivery

Communications and Involvement Network

1. Coproduction Charter
2. Integrated Communications Plan
3. Place branding, platforms and channels

Connecting people, places and resources to support people to **live well** in Warrington



Get in touch

Warringtontogether
Together for a happier and healthier **Warrington**

WarringtonTogether@warrington.gov.uk

[Warrington Together | warrington.gov.uk](http://warrington.gov.uk)

[Warrington Together | Warrington | Facebook](#)

Connecting people, places and resources to support people
to **live well** in Warrington

